



*Total Solution Provider in Saw Device*

---

# SA06530AD

65.0MHz IF SAW Filter  
29.99MHz Bandwidth  
Revision 0: 17. July. 2008



- Electrical Characteristics
  - Package Dimensions
  - Testing Environment
  - Frequency Characteristics
- 

**SAWNICS Inc.**

---

460 Cheonheung-ri, Seonggeo-eup, Cheonan-si, Chungcheongnam-do, 330-836 / Korea.  
Tel: +82 41 550 9372 / Fax: +82 41 550 9399 / [www.sawnics.com](http://www.sawnics.com)

## □ Electrical Characteristics

### Maximum Ratings

Parameters Description	Unit	Minimum	Typical	Maximum
Operating Temperature Range	°C	-	25	-
Storage Temperature Range	°C	-40	-	85
Maximum DC Voltage	V	-	-	10
Maximum Input Power	dBm	-	-	10
Source Impedance (single ended) <sup>(1)</sup>	Ω	-	50	-
Load Impedance (single ended) <sup>(1)</sup>	Ω	-	50	-
Package type & size	D			
Length x Width	mm <sup>2</sup>	-	20.0x12.6	-
Height	mm	-	-	5.05

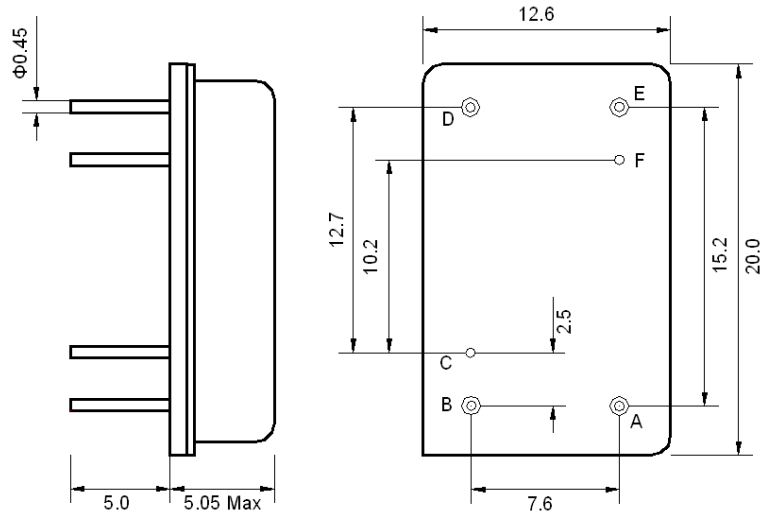
### Electrical Specification

Parameters Description	Unit	Minimum	Typical	Maximum
Center Frequency (Fo)	MHz	-	65.0	-
Insertion Loss at Fo	dB	-	31.5	33.0
Amplitude Ripple Variation within Fo ±14.75 MHz	dB <sub>p-p</sub>	-	0.65	1.0
Group Delay Variation within Fo ±14.75 MHz	nsec	-	30	60
Absolute Delay at Fo	µsec	-	2.14	-
Temperature Coefficient	ppm/°C	-	-72	-
Bandwidth at -1.0 dB	MHz	29.90	29.99	-
Bandwidth at -3.0 dB	MHz	-	30.30	-
Bandwidth at -40.0 dB	MHz	-	31.70	31.90
<b>Attenuation Rejection</b>				
Lower Sidelobe	dB	45	48	
Upper Sidelobe	dB	45	48	

**Notes :** (1) With Matching Network (Ref. Testing Environment Circuit as shown below).

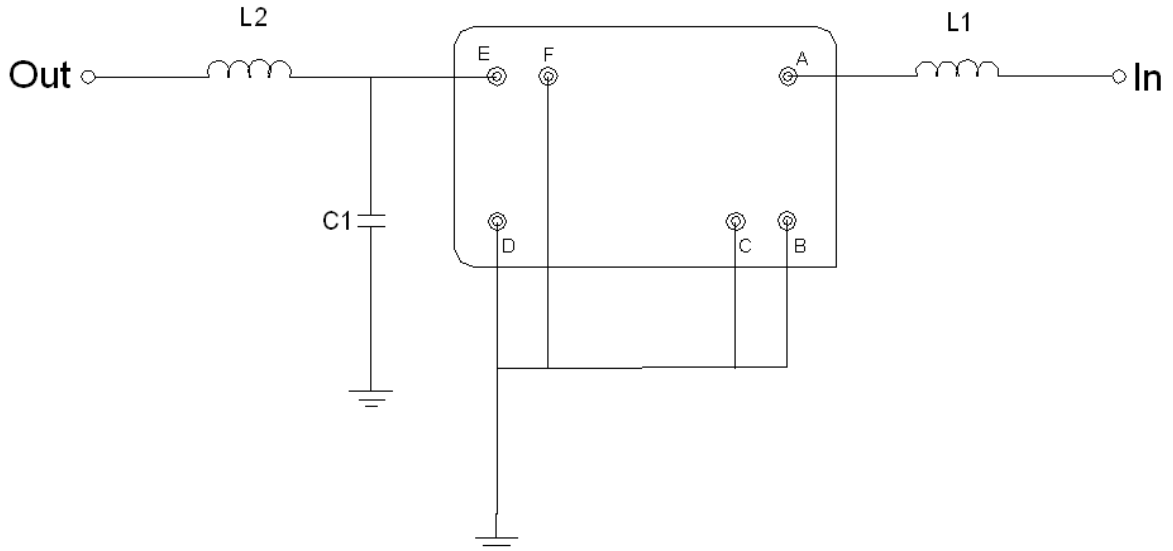
Those impedances could be modified with different impedance values and/or structures, if necessary.

**Package Dimensions**



Pin Description	
B, C, D, F	Ground
A	Input
E	Output

**Testing Environment**



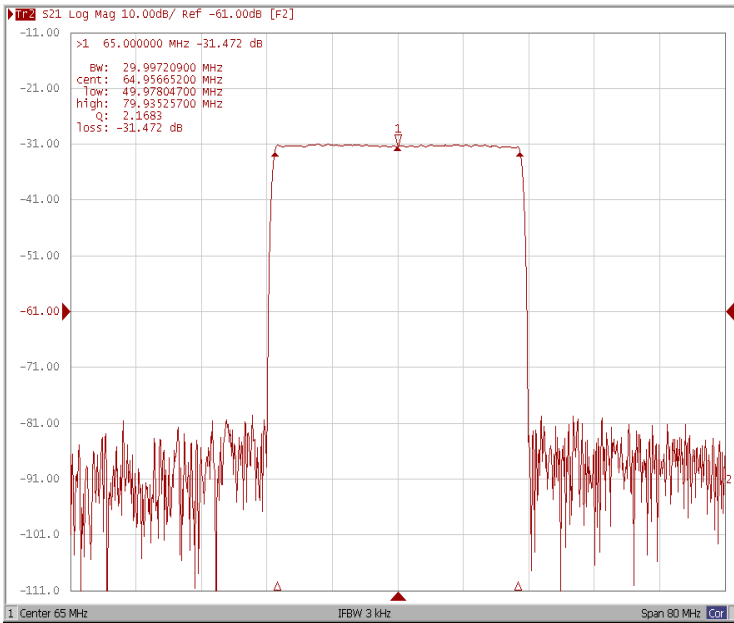
Test Fixture & Values	
Input	L1 = 150 nH
Output	L2 = 180 nH, C1 = 16 pF
Source/Load Impedance	50 Ω



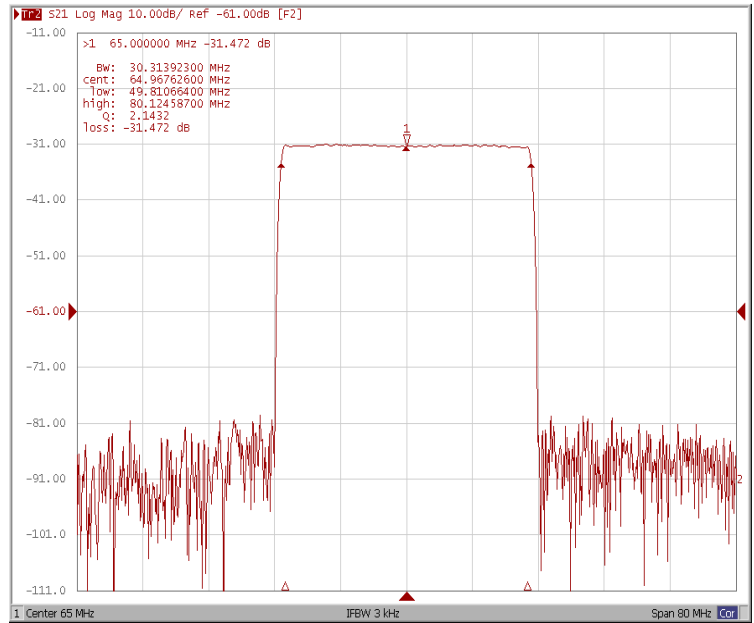
### □ Frequency Characteristics

#### Frequency Response

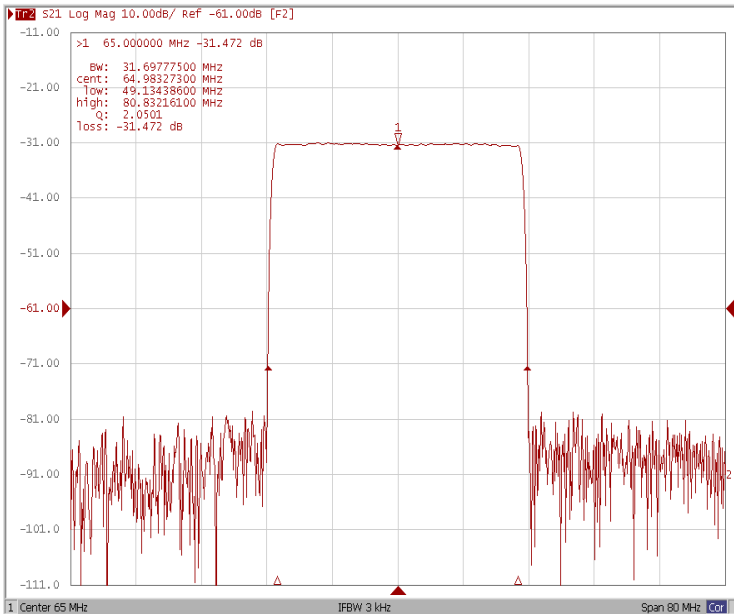
Bandwidth at -1.0 dB



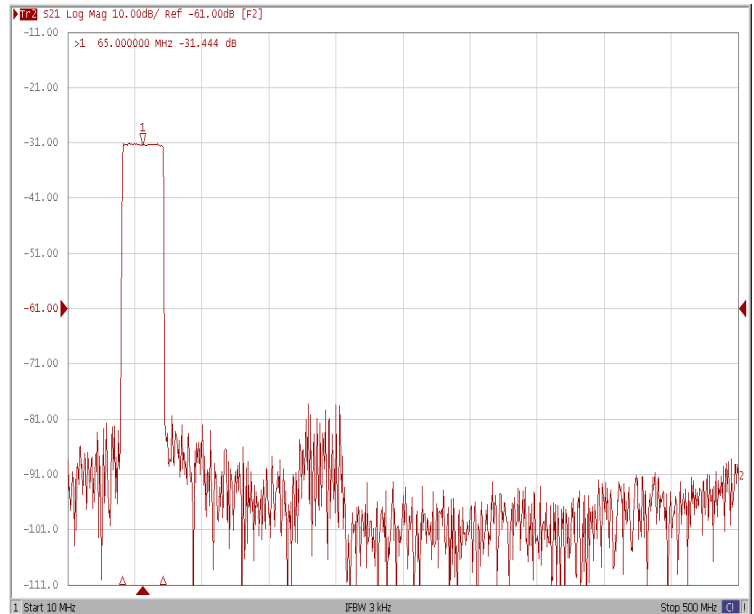
Bandwidth at -3.0 dB



Bandwidth at -40.0 dB



Wide-Band

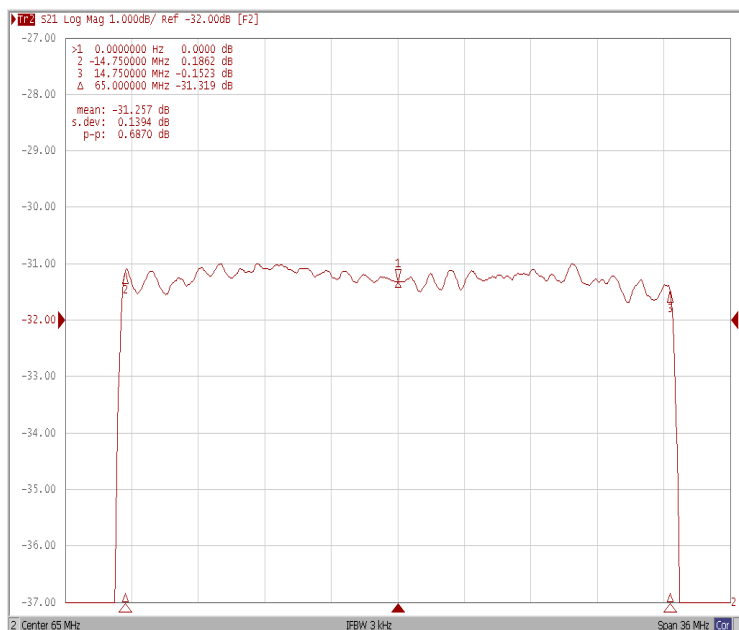




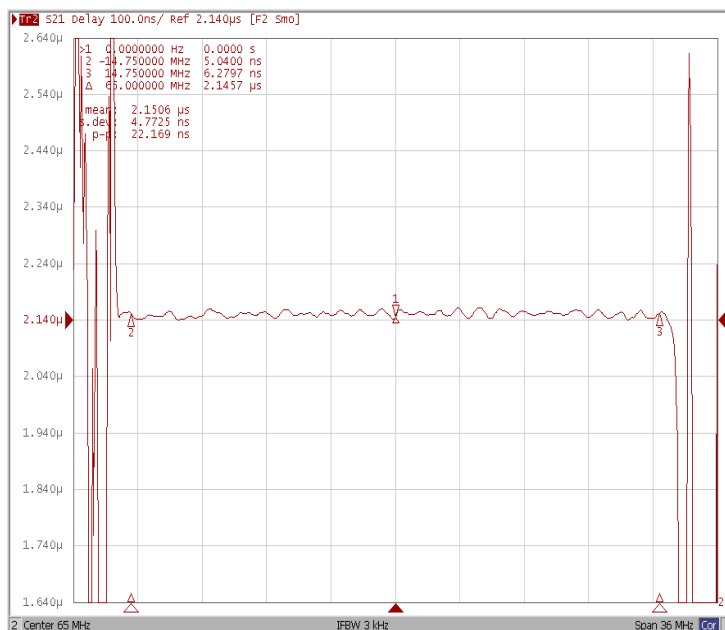
### Frequency Characteristics

#### Frequency Response

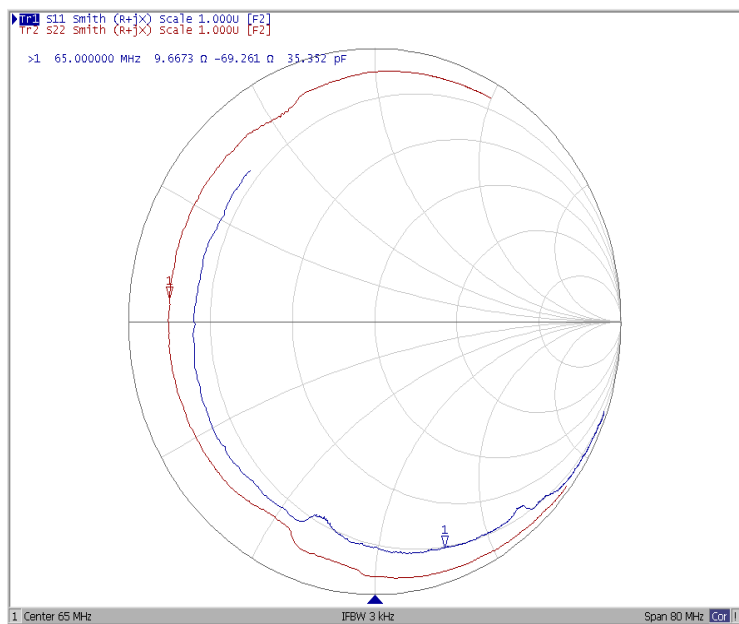
Ripple Variation Fo±14.75MHz



Group Delay Variation Fo±14.75MHz



Smith Chart



SWR

