



*Total Solution Provider in Saw Device*

---

# SA433DK

Remote Control, RF SAW Filter  
Revision 0: July 2005



- Electrical Characteristics
  - Package Dimensions
  - Testing Environment
  - Frequency Characteristics
- 

**SAWNICS Inc.**

---

460 Cheonheung-ri, Seonggeo-eup, Cheonan-si, Chungcheongnam-do, 330-836 / Korea.  
Tel: +82 41 550 9372 / Fax: +82 41 550 9399 / [www.sawnics.com](http://www.sawnics.com)

## □ Electrical Characteristics

### Maximum Ratings

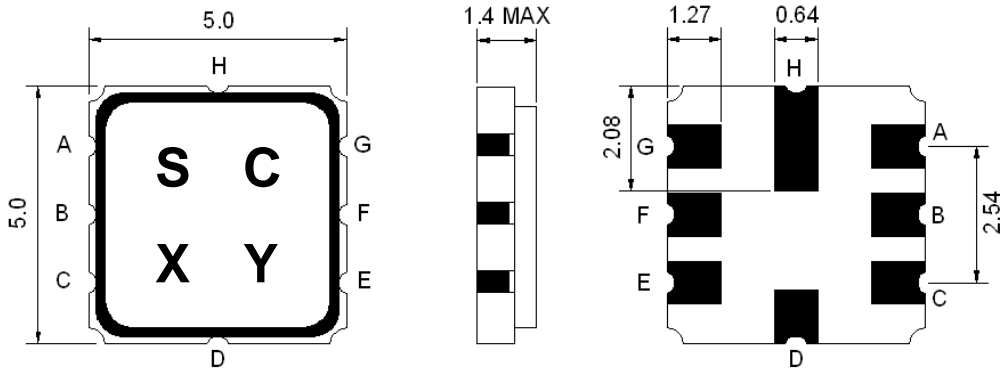
Parameters Description	Unit	Minimum	Typical	Maximum
Operating Temperature Range	°C	-40	-	+85
Storage Temperature Range	°C	-40	-	+85
Maximum DC Voltage	V	-	-	10
Maximum Input Power	dBm	-	-	10
Source Impedance (single ended) <sup>(1)</sup>	Ω	-	50	-
Load Impedance (single ended) <sup>(1)</sup>	Ω	-	50	-
Package type & size	K			
Length x Width	mm <sup>2</sup>	-	5.0 x 5.0	-
Height	mm	-	-	1.4

### Electrical Specification

Parameters Description	Unit	Minimum	Typical	Maximum
Center Frequency (Fo)	MHz	-	433.92	-
Insertion Loss within 433.80 ~ 434.12 MHz	dB	-	2.0	4.5
Pass Band Ripple within 433.76 ~ 434.16 MHz	dB	-	1.0	2.0
<b>Relative Attenuation</b>				
10.0 ~ 414.0 MHz	dB	45	50	-
414.0 ~ 428.0 MHz	dB	40	45	-
428.0 ~ 432.92 MHz	dB	15	20	-
434.92 ~ 442.0 MHz	dB	10	15	-
442.0 ~ 550.0 MHz	dB	35	40	-
550.0 ~ 1000.0 MHz	dB	45	50	-

**Notes :** (1) With Matching Network .

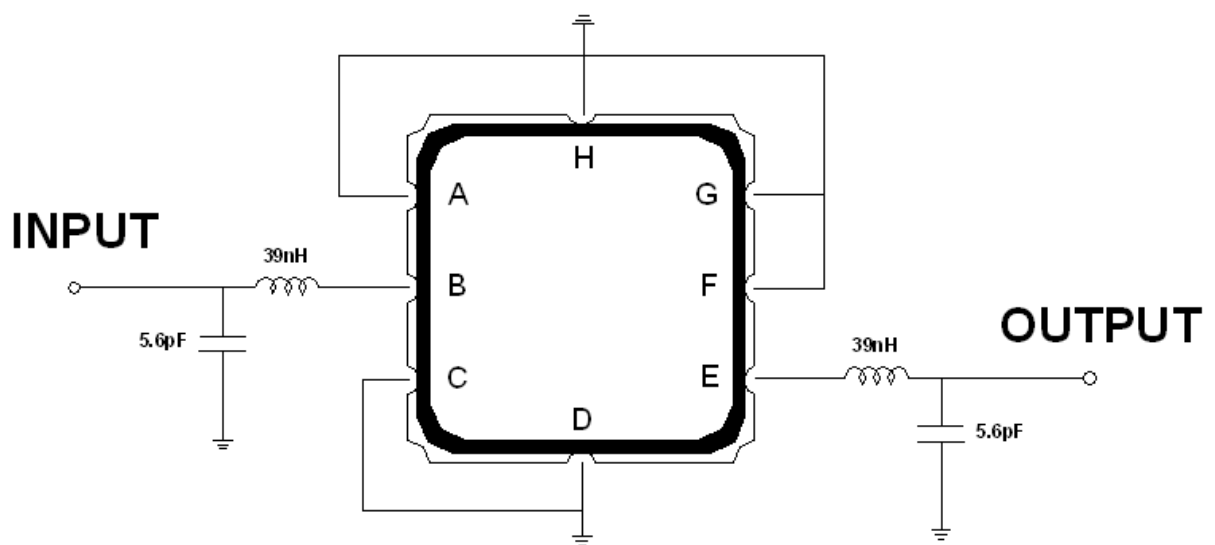
**□ Package Dimensions**



Marking Descriptions	
S	TCRF Application
C	Series Number
X	Date Code(Year)
Y	Date Code(Month)

Pin Description	
A, C, D, F, G, H	Ground
B	In
E	Out

**□ Testing Environment**



Source & Load Impedance: 50 Ω

**□ Frequency Characteristics**

Frequency Response

