



Total Solution Provider in Saw Device

SA434BP

Wireless, RF SAW Filter
Revision 0:



- Electrical Characteristics
 - Package Dimensions
 - Testing Environment
 - Frequency Characteristics
-

SAWNICS Inc.

460 Cheonheung-ri, Seonggeo-eup, Cheonan-si, Chungcheongnam-do, 330-836 / Korea.
Tel: +82 41 550 9372 / Fax: +82 41 550 9399 / www.sawnics.com

□ Electrical Characteristics

Maximum Ratings

Parameters Description	Unit	Minimum	Typical	Maximum
Operating Temperature Range	°C	-30	-	+65
Storage Temperature Range	°C	-40	-	+85
Maximum DC Voltage	V	-	-	10
Maximum Input Power	dBm	-	-	0
Source Impedance (single ended) ⁽¹⁾	Ω	-	150	-
Load Impedance (single ended) ⁽¹⁾	Ω	-	150	-
Package type & size	P			
Length x Width	mm ²	-	3.8 x 3.8	-
Height	mm	-	-	1.4

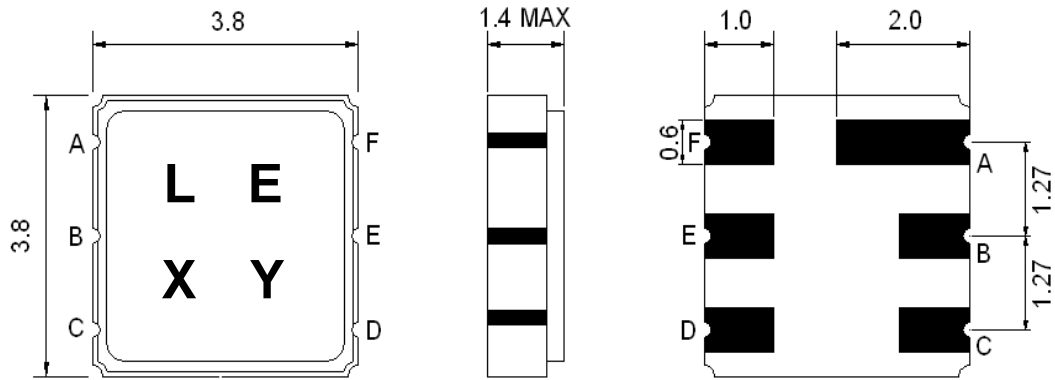
Electrical Specification

Parameters Description	Unit	Minimum	Typical	Maximum
Center Frequency (Fo)	MHz	-	434.0	-
Insertion Loss within 432 ~ 436 MHz	dB	-	1.5	3.5
Amplitude Ripple within 432 ~ 436 MHz	dB _{p-p}	-	0.8	2.0
Attenuation:				
Fo-200 ~ Fo-42.8 MHz	dB	50	55	-
Fo+40 ~ Fo+200 MHz	dB	50	55	-

Notes : (1)) With Matching Network (Ref. Testing Environment Circuit as shown below).

Those impedances could be modified with different impedance values and/or structures, if necessary.

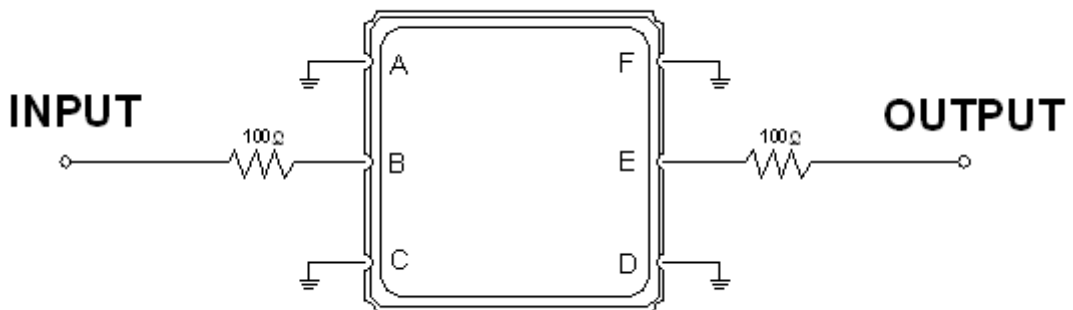
Package Dimensions



Marking Descriptions	
L	Wireless Application
E	Series Number
X	Date Code(Year)
Y	Date Code(Month)

Pin Description	
A, C, D, F	Ground
B	In
E	Out

Testing Environment



Source & Load Impedance: 50 Ω

□ Frequency Characteristics

Frequency Response

