



Total Solution Provider in Saw Device

SA858DM1

LTE, Balanced RF SAW Filter
Revision 0: November 2011



- Electrical Characteristics
 - Package Dimensions
 - Testing Environment
 - Frequency Characteristics
-

SAWNICS Inc.

460 Cheonheung-ri, Seonggeo-eup, Cheonan-si, Chungcheongnam-do, 330-836 / Korea.
Tel: +82 41 550 9372 / Fax: +82 41 550 9399 / www.sawnics.com

□ Electrical Characteristics

Maximum Ratings

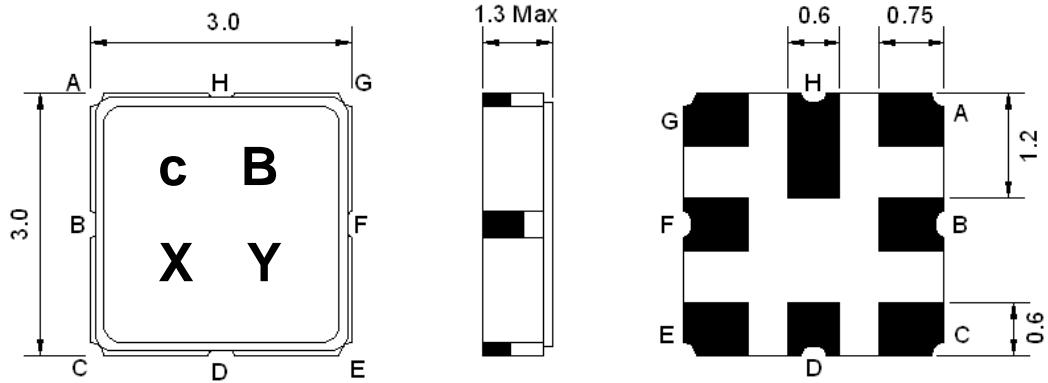
Parameters Description	Unit	Minimum	Typical	Maximum
Operating Temperature Range	°C	-30	-	+80
Storage Temperature Range	°C	-40	-	+85
Maximum DC Voltage	V	-	-	0
Maximum Input Power	dBm	-	-	10
Source Impedance (Balanced) ⁽¹⁾	Ω	-	100	-
Load Impedance (Single ended) ⁽¹⁾	Ω	-	50	-
Package type & size	M1			
Length x Width	mm ²	-	3.0 x 3.0	-
Height	mm	-	-	1.3

Electrical Specification

Parameters Description	Unit	Minimum	Typical	Maximum
Center Frequency (Fo)	MHz	-	858.5	-
Insertion Loss within 851.0 ~ 866.0 MHz	dB	-	2.2	3.2
Amplitude Ripple within 851.0 ~ 866.0 MHz	dB _{P-P}	-	0.3	1.0
Attenuation:				
D.C ~ 806.0 MHz	dB	50	60	-
806.0 ~ 821.0 MHz	dB	40	46	-
910.0 ~ 958.0 MHz	dB	33	36	-
VSWR within 851.0 ~ 866.0 MHz	-	-	1.9	2.5

Notes : (1) With Matching Network

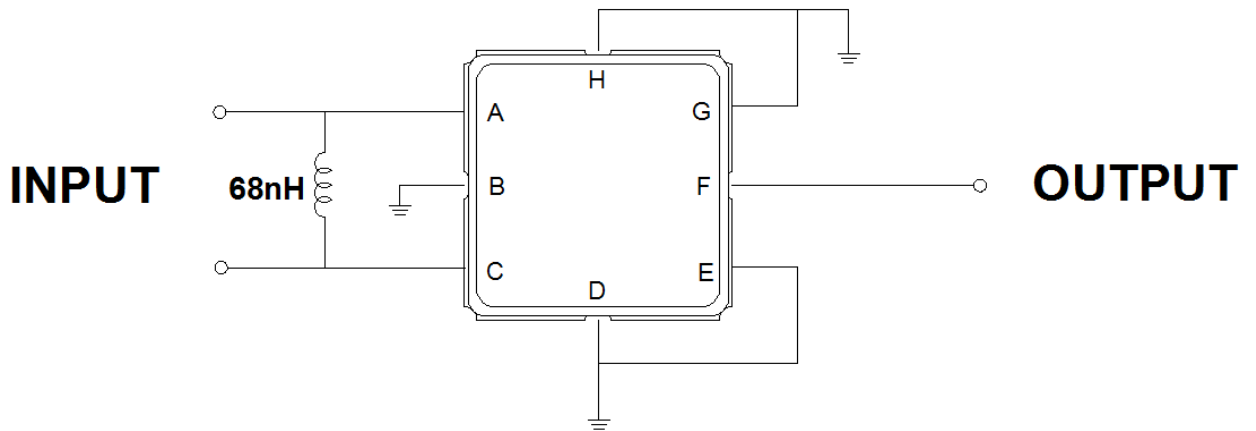
Package Dimensions



Marking Descriptions	
c	Wireless Application
B	Series Number
X	Date Code(Year)
Y	Date Code(Month)

Pin Description	
B, D, E, G, H	Ground
A, C	Balanced Input
F	Output

Testing Environment

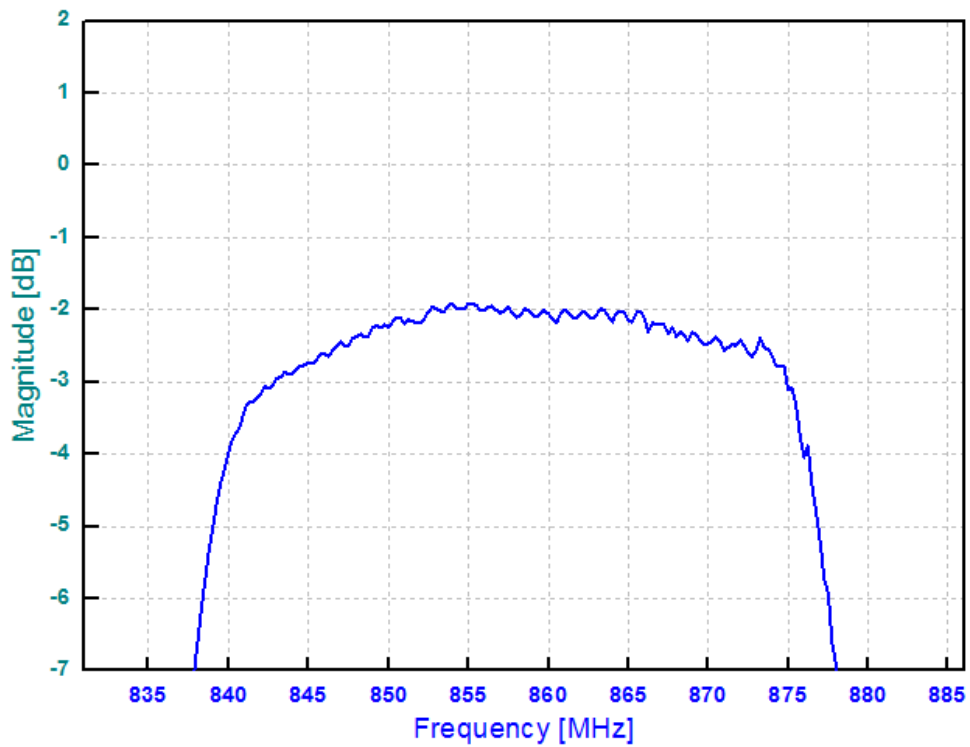
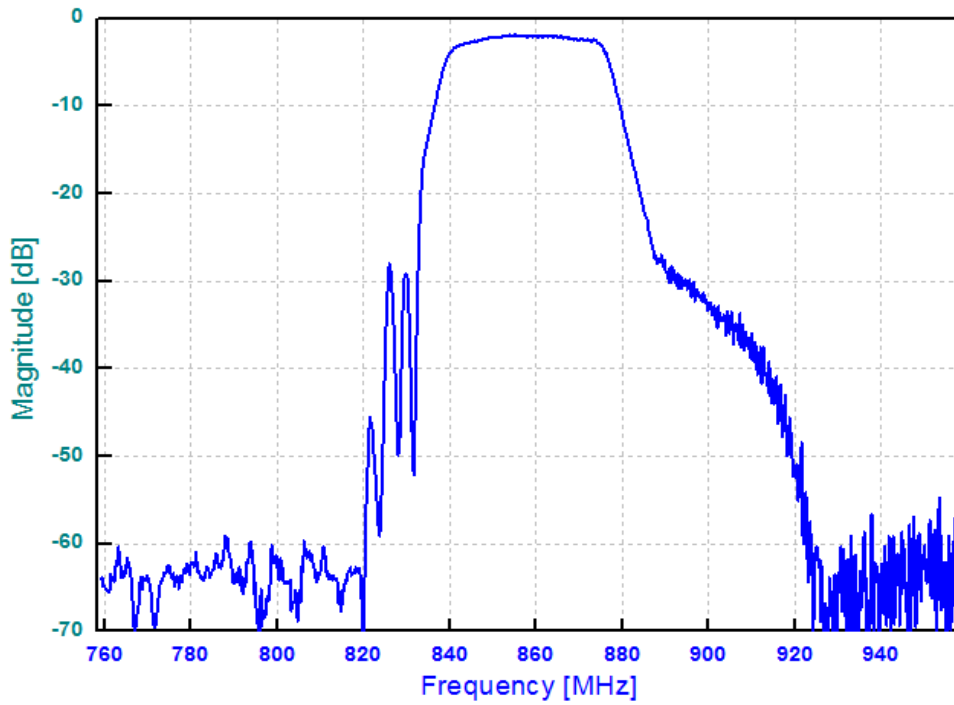


Source Impedance: 100 Ω

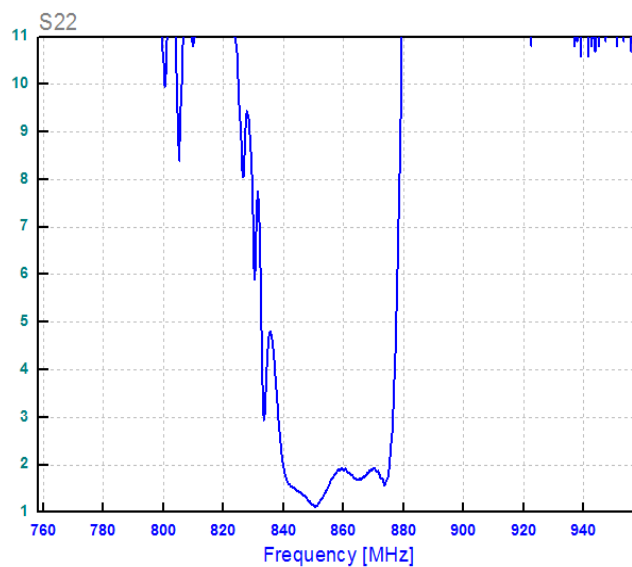
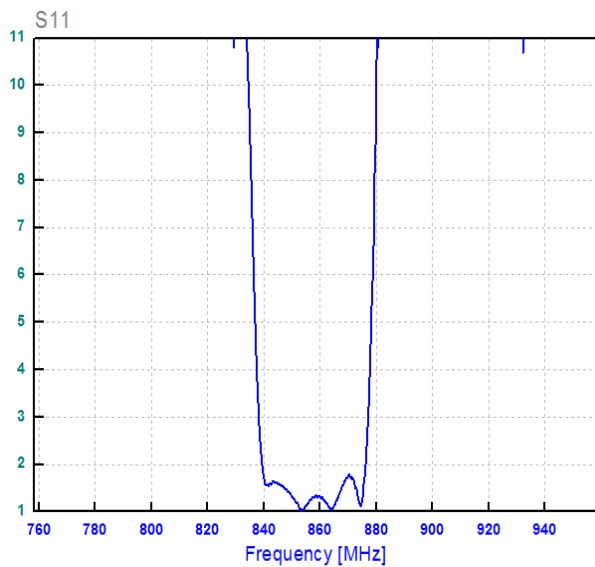
Load Impedance : 50 Ω

□ Frequency Characteristics

Frequency Response



VSWR



Smith Chart

