



Total Solution Provider in Saw Device

SF-004501-SC0

45.00 MHz IF SAW Filter
9.38 MHz Bandwidth
Revision 0: 29. November. 2012



- Electrical Characteristics
 - Package Dimensions
 - Testing Environment
 - Frequency Characteristics
-

SAWNICS Inc.

460 Cheonheung-ri, Seonggeo-eup, Cheonan-si, Chungcheongnam-do, 330-836 / Korea.
Tel: +82 41 550 9372 / Fax: +82 41 550 9399 / www.sawnics.com

□ Electrical Characteristics

Maximum Ratings

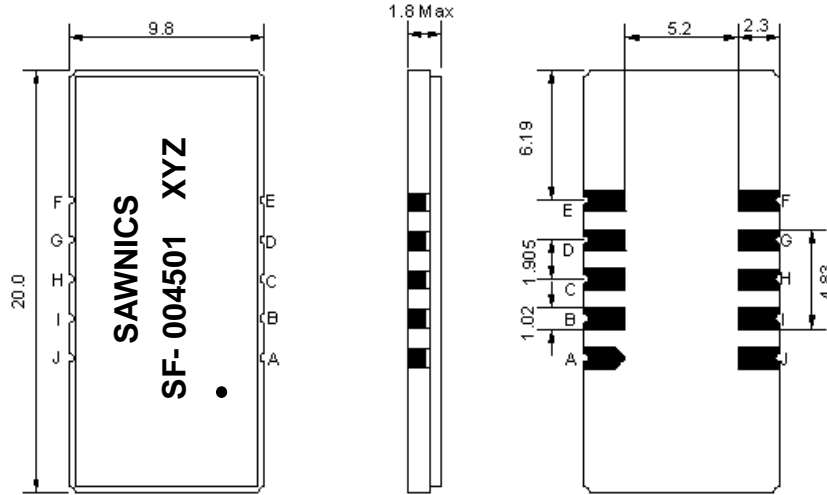
Parameters Description	Unit	Minimum	Typical	Maximum
Operation Temperature Range	°C	-	25	-
Storage Temperature Range	°C	-40	-	85
Maximum DC Voltage	V	-	-	10
Maximum Input Power	dBm	-	-	10
Source Impedance (single ended) ⁽¹⁾	Ω	-	50	-
Load Impedance (single ended) ⁽¹⁾	Ω	-	50	-
Package type & size	SC0			
Length x Width	mm ²	-	20.0 x 9.8	-
Height	mm	-	-	1.8

Electrical Specification

Parameters Description	Unit	Minimum	Typical	Maximum
Center Frequency (Fo)	MHz	-	45.0	-
Insertion Loss at Fo	dB	-	25.0	26.5
Group Delay Variation at Fo ± 4.50 MHz	nsec	-	50	100
Absolute Delay at Fo	usec	-	2.24	-
Passband Ripple Variation at Fo ± 4.50 MHz	dB	-	0.6	1.2
Bandwidth at -1dB	MHz	9.20	9.38	-
Bandwidth at -3dB	MHz	-	9.68	-
Bandwidth at -45dB	MHz	-	10.97	11.10
Ultimate Rejection	dB	45	48	-
Temperature Coefficient	ppm/°C	-	-72	-

Notes : (1) With Matching Network (Ref. Testing Environment Circuit as shown below).
Those impedances could be modified with different impedance values and/or structures, if necessary.

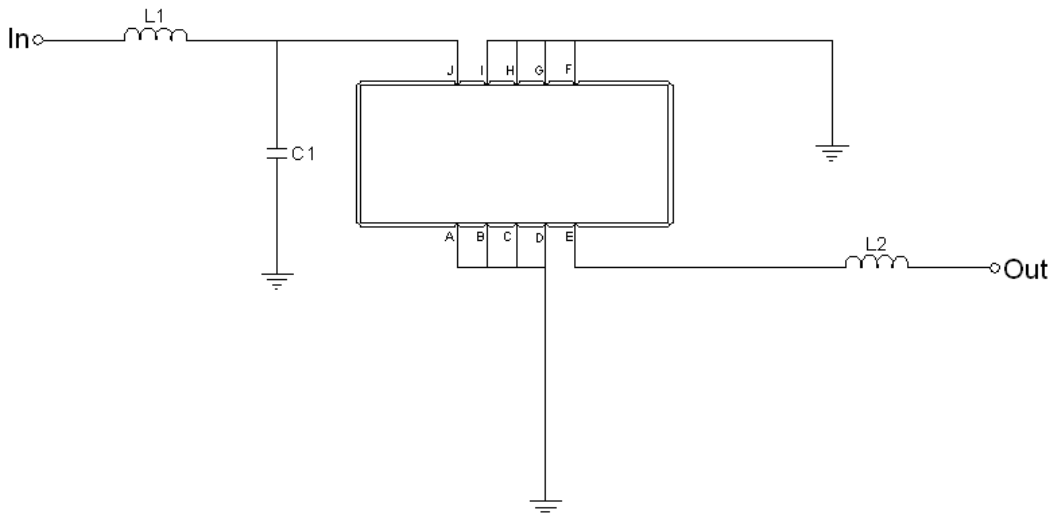
Package Dimensions



- ① SAWNICS: Brand
- ② SF-004501: Model Name
- ③ X : Date Code (Year)
- ④ Y : Date Code (Month)
- ⑤ Z : Date Code (Date)
- : Index Dot

Pin Description	
A, B, C, D, F, G, H, I	Ground
J	Input
E	Output

Testing Environment



Test Fixture & Values	
Input	L1 = 220nH, C1=39pF
Output	L2 = 220nH,
Source/Load Impedance	50 Ω

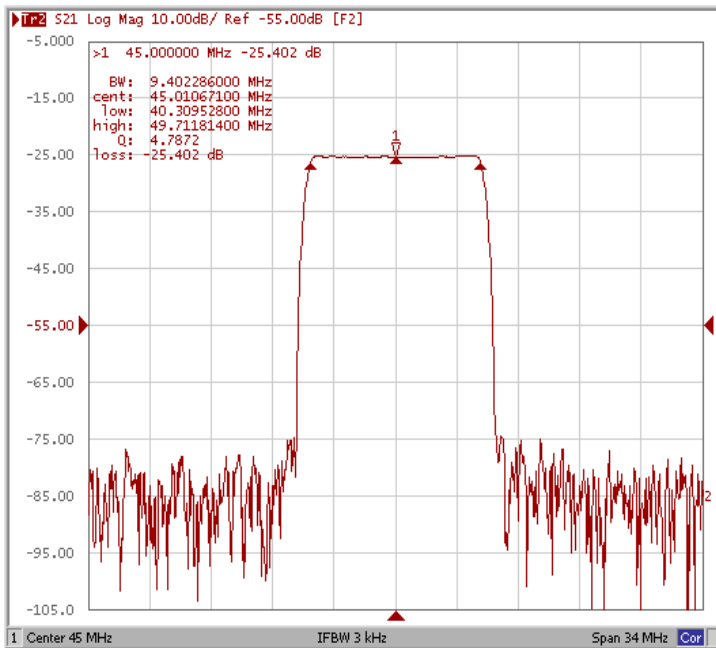


□ Frequency Characteristics

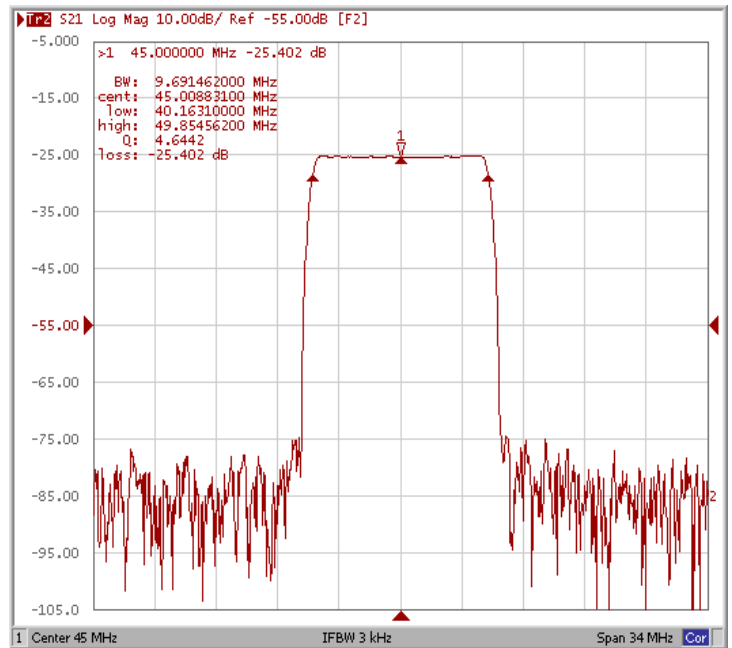
Frequency Response

Operating Temperature : +25 °C

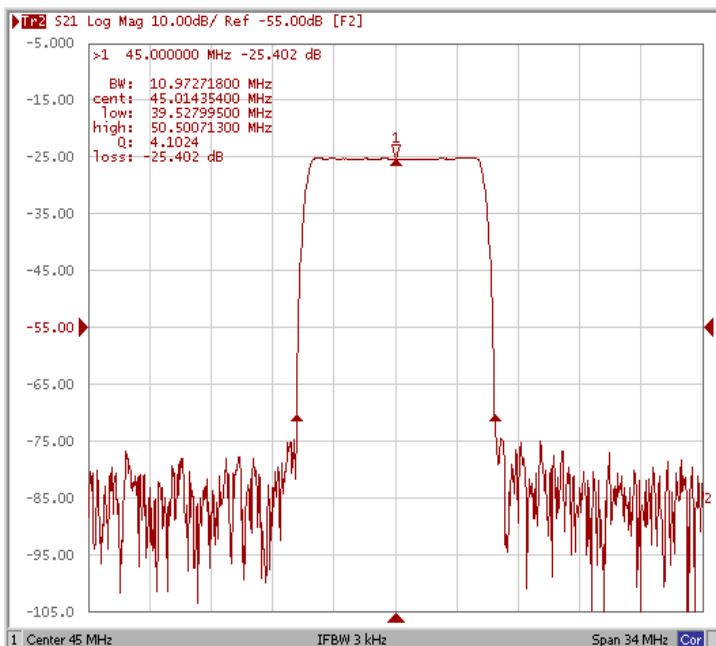
Bandwidth at -1.0 dB



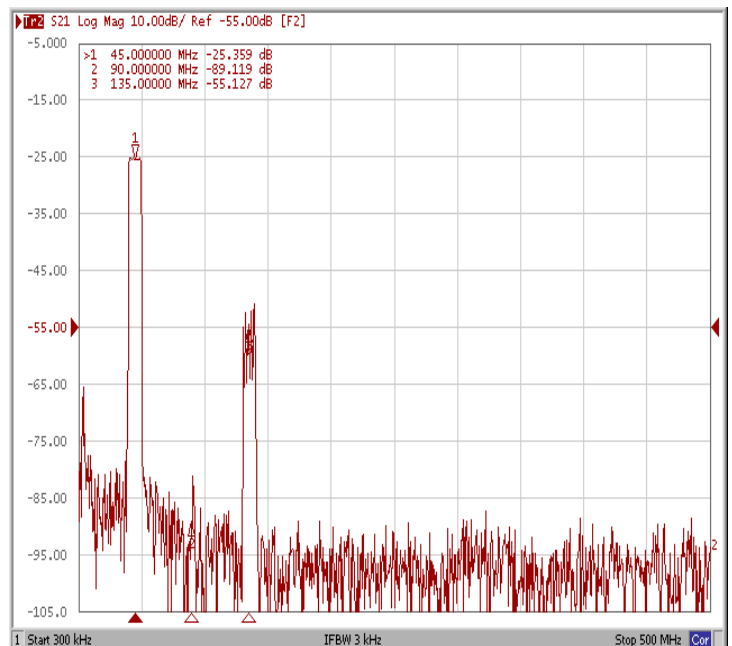
Bandwidth at -3.0 dB



Bandwidth at -45 dB



Wide-Band

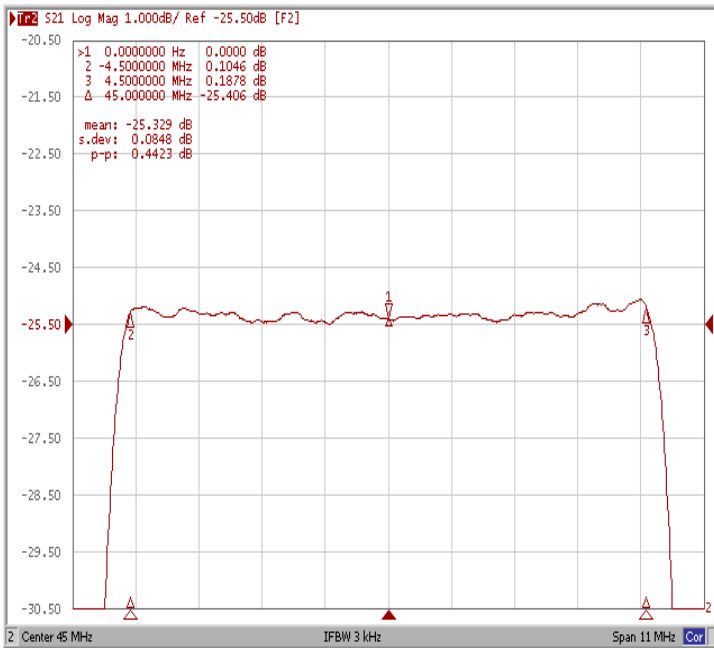




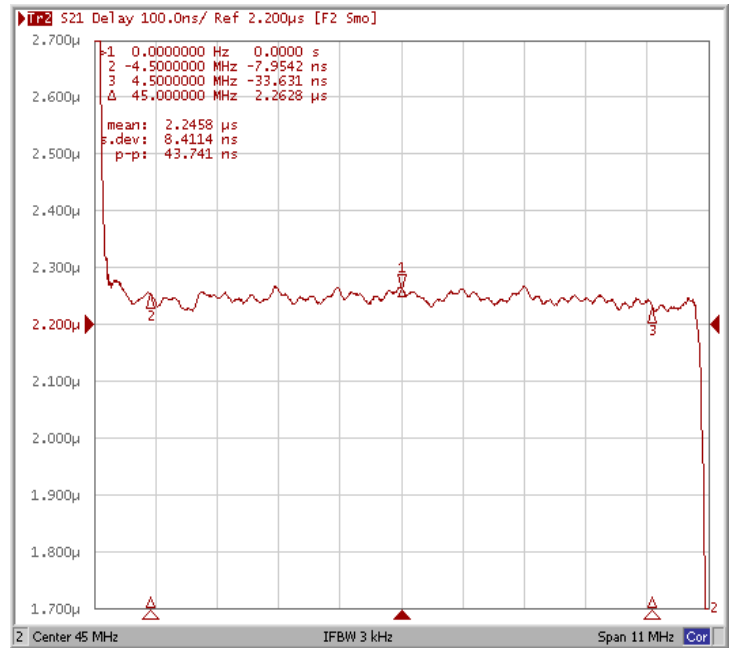
Frequency Characteristics

Frequency Response

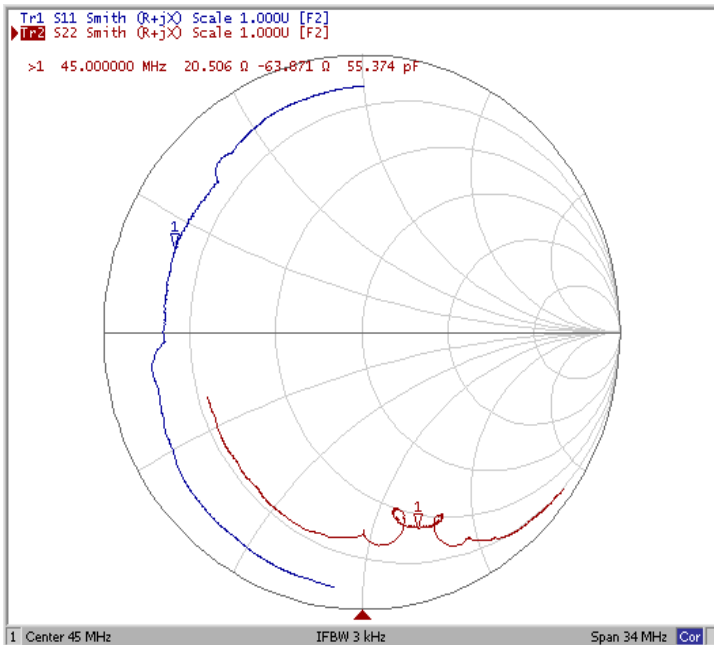
Ripple Variation Fo±4.50MHz



Group Delay Variation Fo±4.50MHz



Smith Chart



VSWR

