



Total Solution Provider in Saw Device

SF-007017-D60

70.00 MHz IF SAW Filter
0.64 MHz Bandwidth
Revision 0: January 2014



- Electrical Characteristics
 - Package Dimensions
 - Testing Environment
 - Frequency Characteristics
-

SAWNICS Inc.

460 Cheonheung-ri, Seonggeo-eup, Cheonan-si, Chungcheongnam-do, 330-836 / Korea.
Tel: +82 41 550 9372 / Fax: +82 41 550 9399 / www.sawnics.com

□ Electrical Characteristics

Maximum Ratings

Parameters Description	Unit	Minimum	Typical	Maximum
Operation Temperature Range	°C	-30	-	80
Storage Temperature Range	°C	-40	-	85
Maximum DC Voltage	V	-	-	10
Maximum Input Power	dBm	-	-	10
Source Impedance (single ended) ⁽¹⁾	Ω	-	50	-
Load Impedance (single ended) ⁽¹⁾	Ω	-	50	-
Package type & size	D60			
Length x Width	mm ²	-	27.2 x12.5	-
Height	mm	-	-	5.3

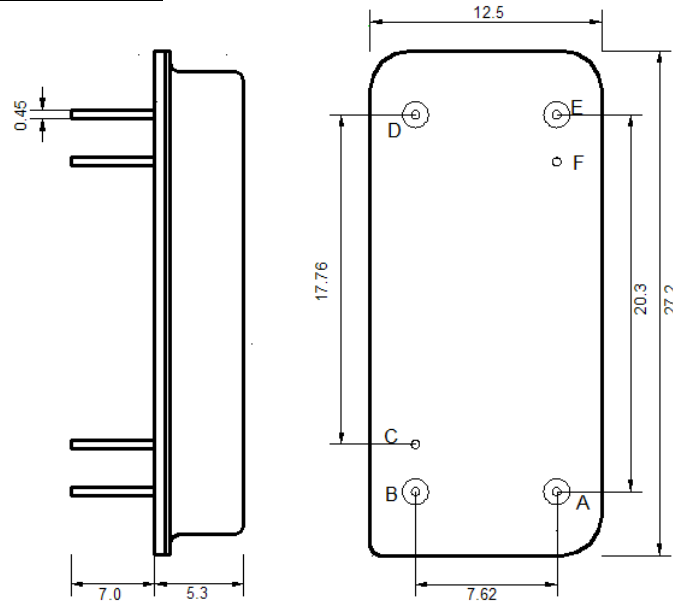
Electrical Specification

Parameters Description	Unit	Minimum	Typical	Maximum
Center Frequency (Fo)	MHz	-	70.0	-
Insertion Loss at Fo	dB	-	13.8	16.0
Absolute Delay at Fo	usec	-	3.44	-
Bandwidth at -3dB	MHz	0.51	0.64	-
Bandwidth at -50dB	MHz	-	1.29	1.40
Out of Band Rejection				
Fo +/- 0.7MHz	dB	50	59	-
Fo +/- 2.0MHz	dB	50	60	-
Temperature Coefficient	ppm/°C	-	-0.03	-

Notes : (1) With Matching Network (Ref. Testing Environment Circuit as shown below).

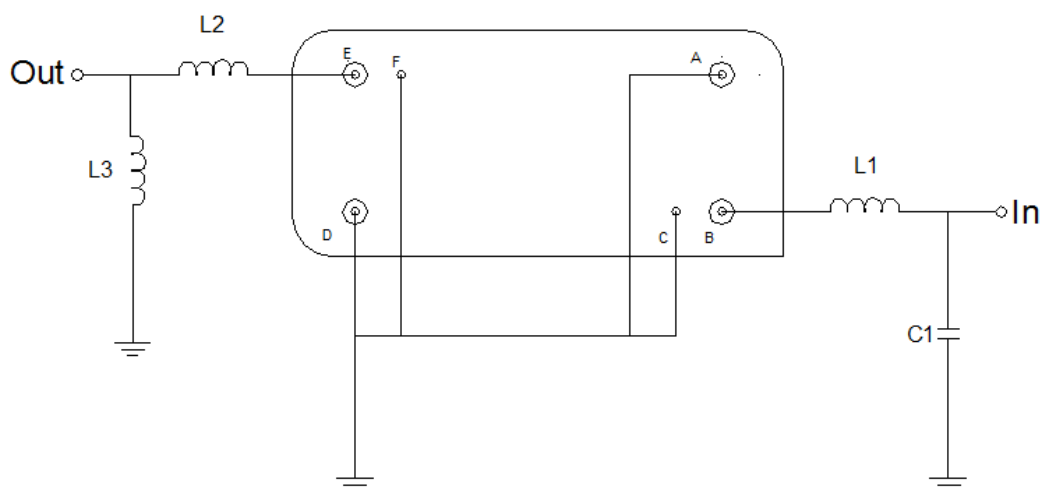
Those impedances could be modified with different impedance values and/or structures, if necessary.

Package Dimensions



Pin Description	
A, C, D, F	Ground
B	Input
E	Output

Testing Environment



Test Fixture & Values	
Input	L1 = 220nH, C1 = 47pF
Output	L2 = 82nH, L3 = 56nH
Source/Load Impedance	50 Ω

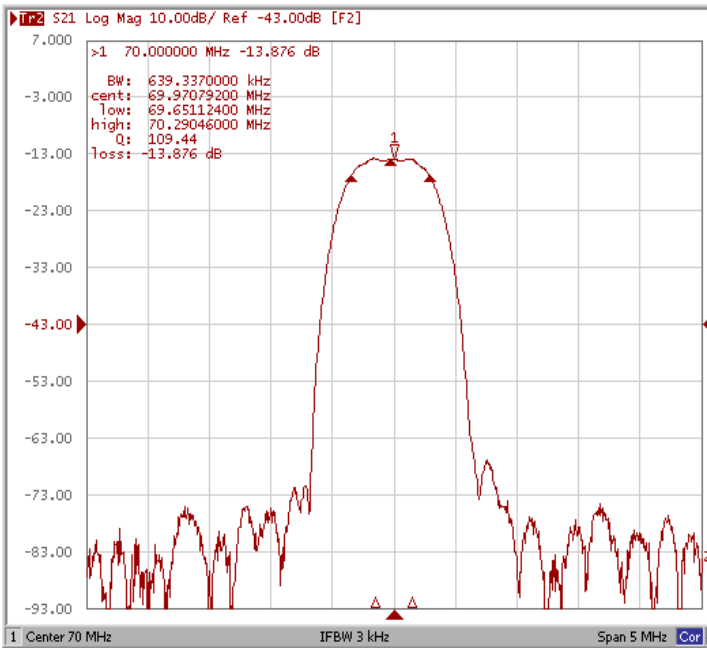


Frequency Characteristics

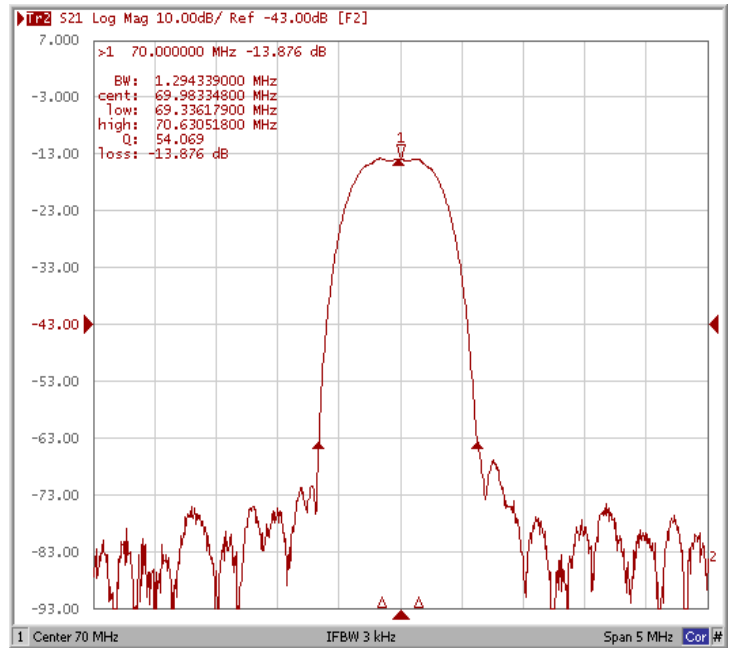
Frequency Response

Operating Temperature : +25 °C

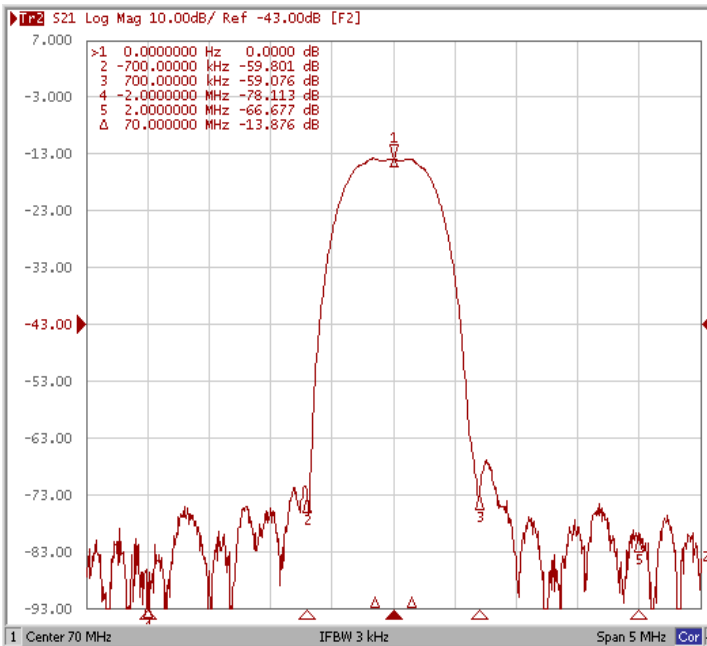
Bandwidth at -3.0 dB



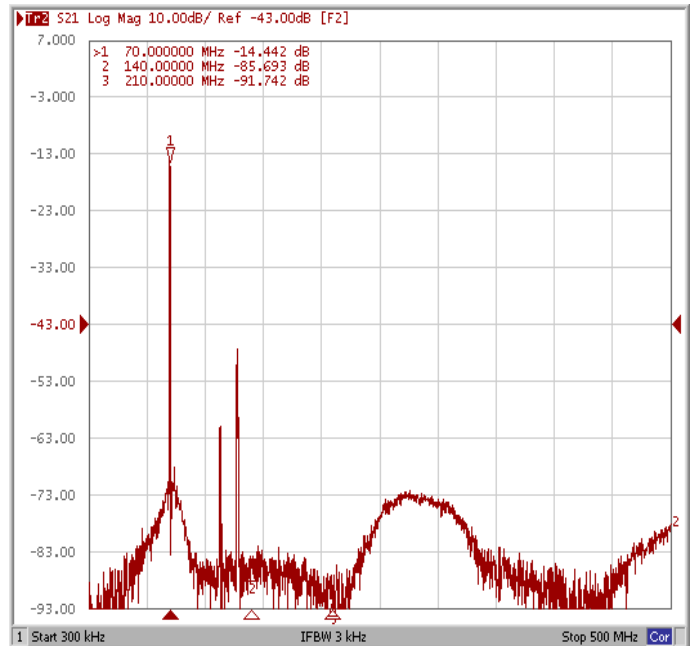
Bandwidth at -50.0 dB



Out of Band Rejection



Wide-Band





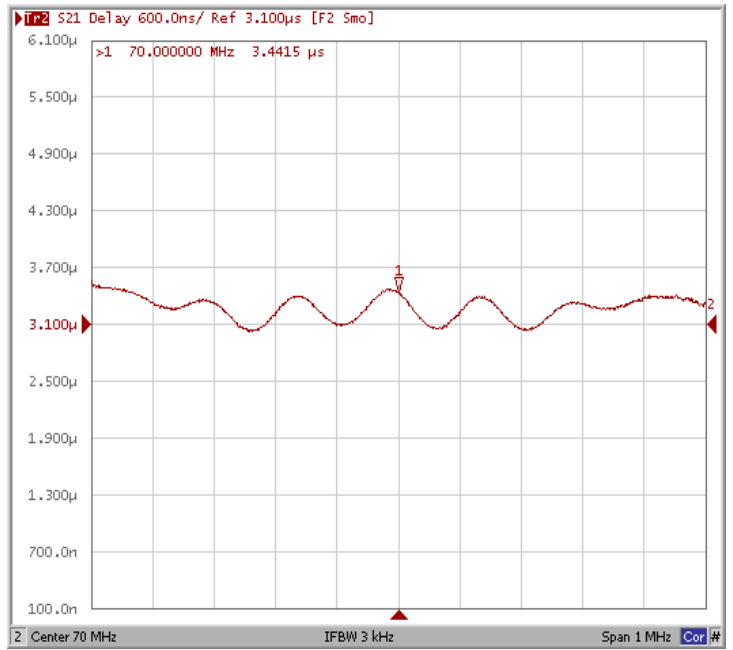
Frequency Characteristics

Frequency Response

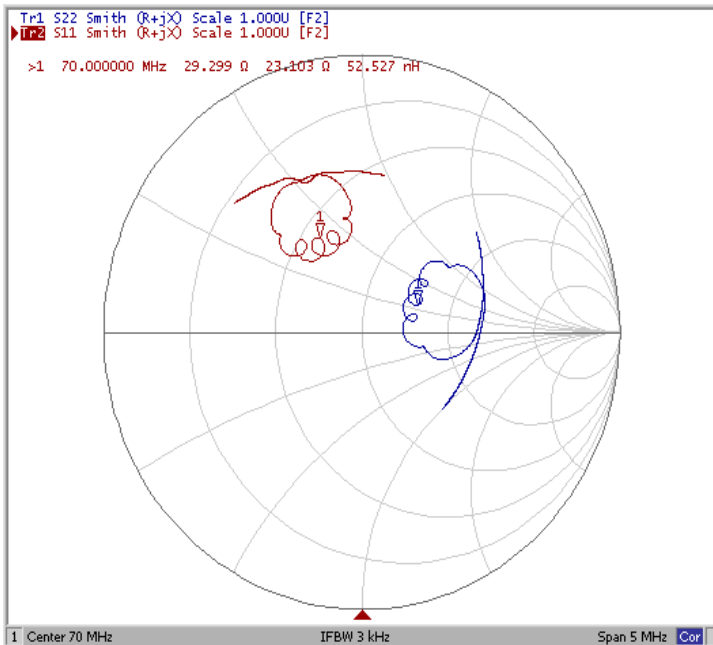
Ripple Variation



Group Delay Variation



Smith Chart



VSWR

