



Total Solution Provider in Saw Device

SF-022201-S90

222.50 MHz IF SAW Filter

18.87 MHz Bandwidth

Revision 0: October 2013



- Electrical Characteristics
 - Package Dimensions
 - Testing Environment
 - Frequency Characteristics
-

SAWNICS Inc.

460 Cheonheung-ri, Seonggeo-eup, Cheonan-si, Chungcheongnam-do, 330-836 / Korea.
Tel: +82 41 550 9372 / Fax: +82 41 550 9399 / www.sawnics.com



□ Electrical Characteristics

Maximum Ratings

Parameters Description	Unit	Minimum	Typical	Maximum
Operation Temperature Range	°C	-5	-	70
Storage Temperature Range	°C	-40	-	85
Maximum DC Voltage	V	-	-	-
Maximum Input Power	dBm	-	-	10
Source Impedance (single ended) ⁽¹⁾	Ω	-	50	-
Load Impedance (single ended) ⁽¹⁾	Ω	-	50	-
Package type & size	S90			
Length x Width	mm ²	-	13.3 x 6.5	-
Height	mm	-	-	1.8

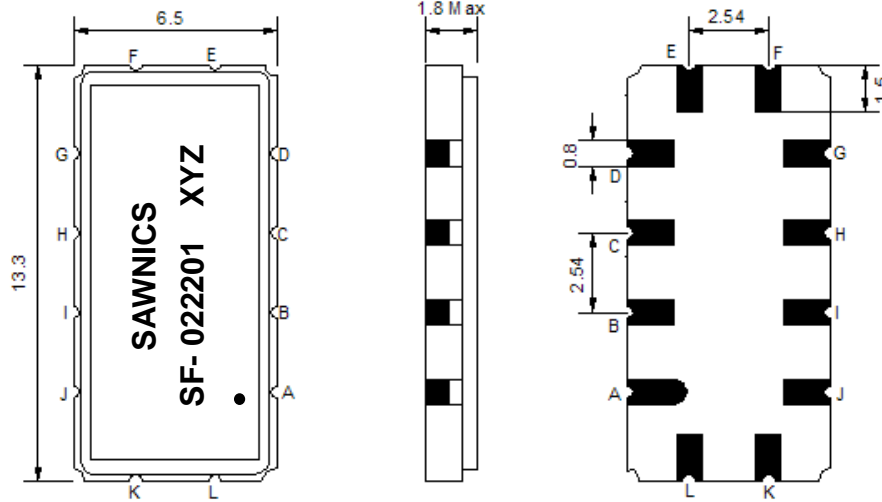
Electrical Specification

Parameters Description	Unit	Minimum	Typical	Maximum
Center Frequency (Fo)	MHz	-	222.50	-
Insertion Loss at Fo	dB	-	28.0	29.5
Group Delay Variation at Fo ± 9.0 MHz	nsec	-	30	60
Absolute Delay at Fo	usec	-	2.06	-
Passband Ripple Variation at Fo ± 9.0 MHz	dB	-	0.55	1.2
Bandwidth at -1dB	MHz	18.70	18.87	-
Bandwidth at -3dB	MHz	-	19.30	-
Bandwidth at -30dB	MHz	-	20.85	21.00
Bandwidth at -40dB	MHz	-	21.07	-
Ultimate Rejection	dB	50	55	-
Temperature Coefficient	ppm/°C	-	-18	-

Notes : (1) With Matching Network (Ref. Testing Environment Circuit as shown below).

Those impedances could be modified with different impedance values and/or structures, if necessary.

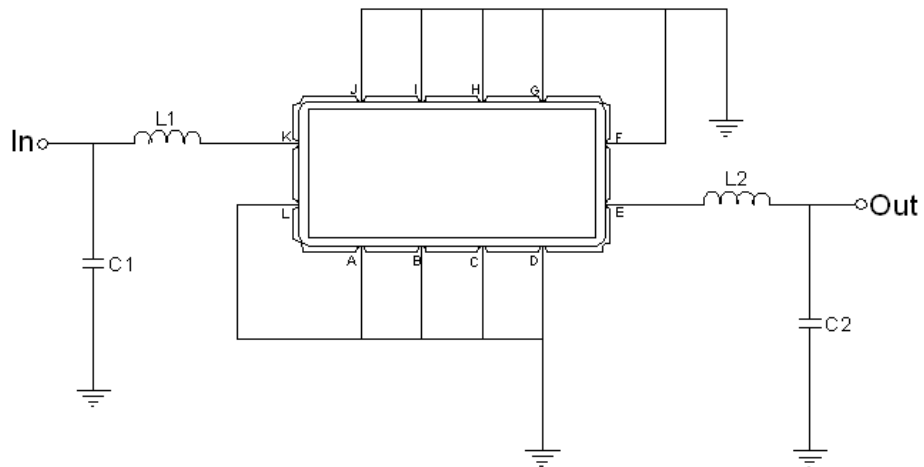
Package Dimensions



- ① SAWNICS: Brand
- ② SF-022201 : Model Name
- ③ X : Date Code (Year)
- ④ Y : Date Code (Month)
- ⑤ Z : Date Code (Date)
- : Index Dot

Pin Description	
A, B, C, D, F, G, H, I, J, L	Ground
K	Input
E	Output

Testing Environment



Test Fixture & Values	
Input	L1 = 27nH, C1=33pF
Output	L2 = 27nH, C2=24pF
Source/Load Impedance	50 Ω

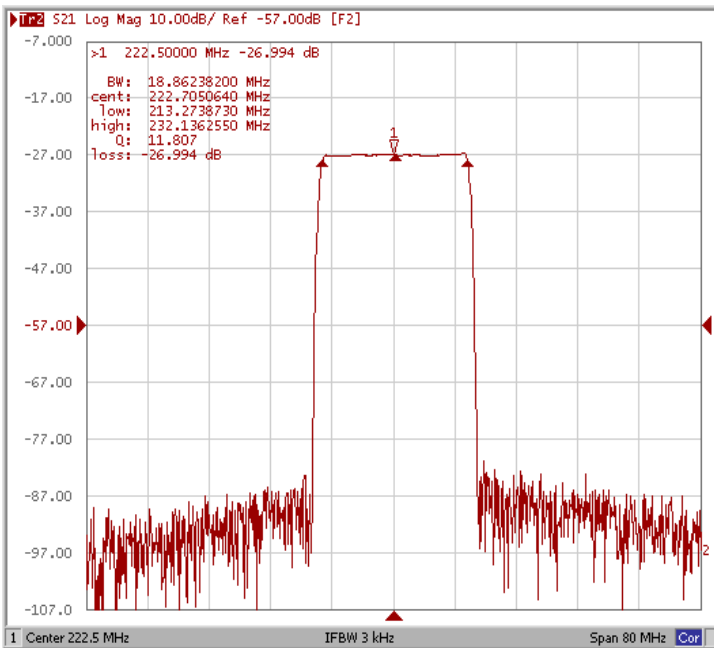


Frequency Characteristics

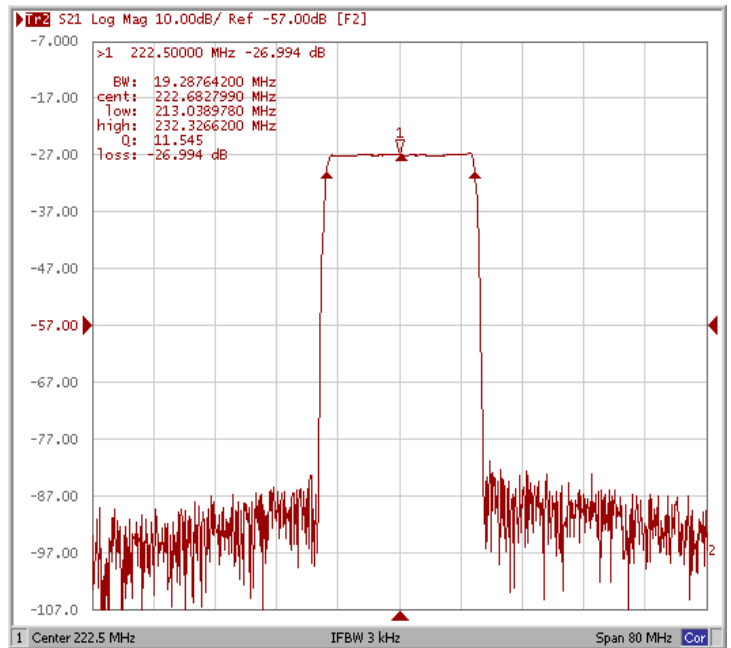
Frequency Response

Operating Temperature : +25 °C

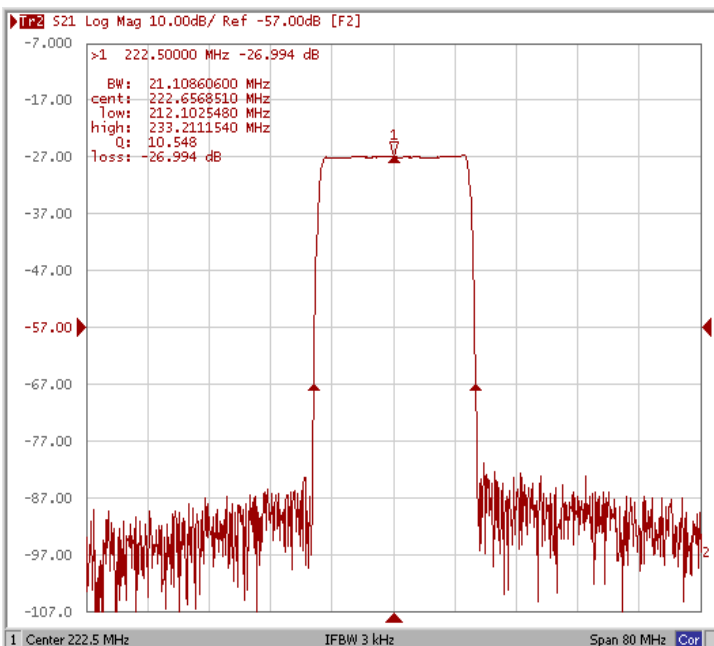
Bandwidth at -1.0 dB



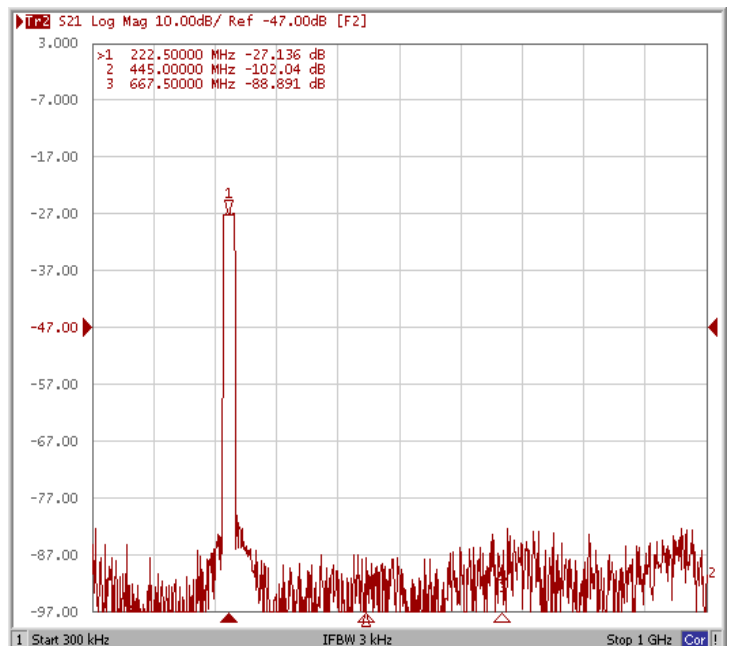
Bandwidth at -3.0 dB



Bandwidth at -40.0 dB



Wide-Band

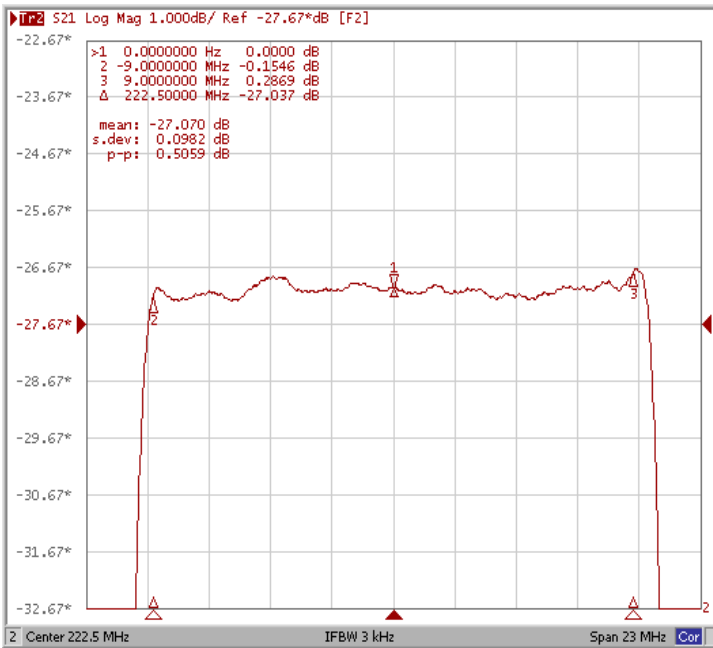




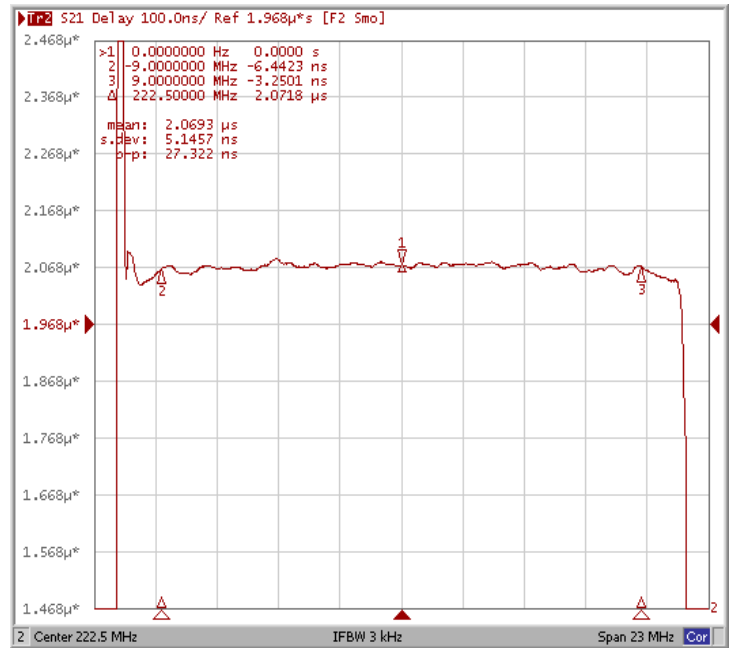
Frequency Characteristics

Frequency Response

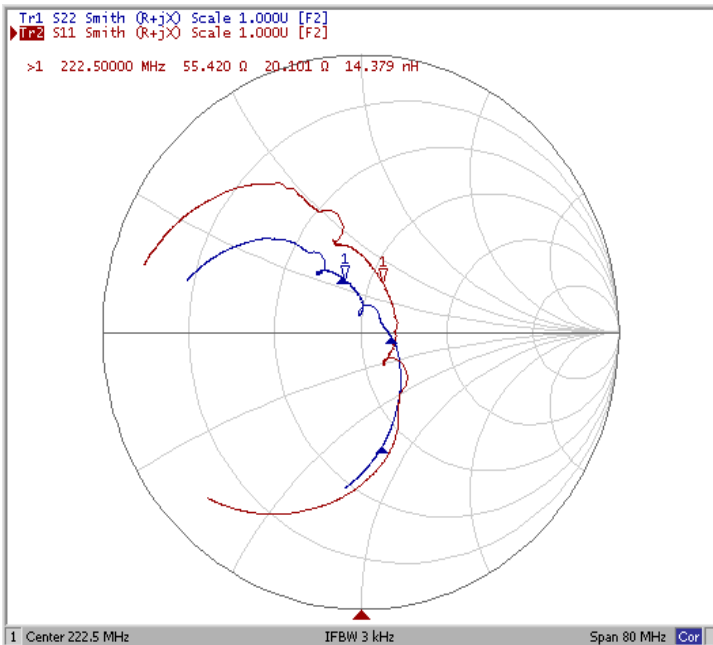
Ripple Variation $Fo \pm 9.0\text{MHz}$



Group Delay Variation $Fo \pm 9.0\text{MHz}$



Smith Chart



VSWR

