



*Total Solution Provider in Saw Device*

---

# SL071001AV1

71.00 MHz IF SAW Filter  
95.00 KHz Bandwidth  
Revision 0: 8. November. 2011



- Electrical Characteristics
  - Package Dimensions
  - Testing Environment
  - Frequency Characteristics
- 

**SAWNICS Inc.**

---

460 Cheonheung-ri, Seonggeo-eup, Cheonan-si, Chungcheongnam-do, 330-836 / Korea.  
Tel: +82 41 550 9372 / Fax: +82 41 550 9399 / [www.sawnics.com](http://www.sawnics.com)



## □ Electrical Characteristics

### Maximum Ratings

Parameters Description	Unit	Minimum	Typical	Maximum
Operation Temperature Range	°C	-20	-	80
Storage Temperature Range	°C	-40	-	85
Maximum Input Power	dBm	-	-	10
Source Impedance (single ended) <sup>(1)</sup>	Ω	-	50	-
Load Impedance (single ended) <sup>(1)</sup>	Ω	-	50	-
Package type & size	V1			
Length x Width	mm <sup>2</sup>	-	13.3 x 6.5	-
Height	mm	-	-	1.65



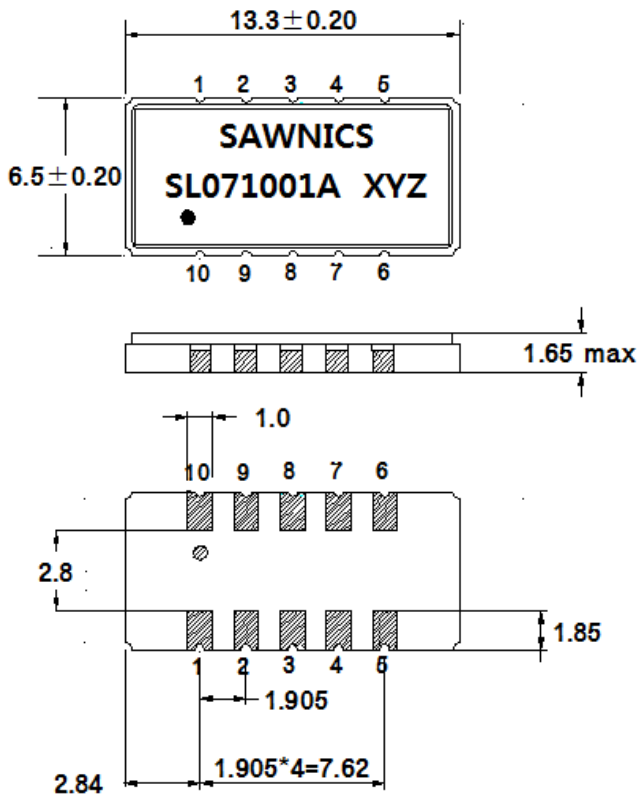
## Electrical Specification

Parameters Description	Unit	Minimum	Typical	Maximum
Center Frequency (Fo)	MHz	-	71.00	-
Insertion Loss at Fo	dB	-	6.5	8.5
Group Delay Variation at Fo $\pm$ 50 KHz	nsec	-	655	1500
Absolute Delay at Fo	usec	-	2.94	-
Passband Ripple Variation at Fo $\pm$ 50 KHz	dB	-	1.2	2.0
Bandwidth at -1dB	MHz	-	0.095	-
Bandwidth at -2dB	MHz	-	0.128	-
Bandwidth at -3dB	MHz	-	0.153	-
Bandwidth at -7dB	MHz	-	0.259	-
Bandwidth at -35dB	MHz	-	0.603	-
<b>Ultimate Rejection</b>				
Fo $\pm$ 300 KHz ~ Fo $\pm$ 500 KHz	dB	15	30	-
Fo $\pm$ 500 KHz ~ Fo $\pm$ 700 KHz	dB	27	30	-
Fo $\pm$ 700 KHz ~ Fo $\pm$ 3 MHz	dB	37	43	-
Fo $\pm$ 800 KHz	dB	37	43	-
Fo $\pm$ 3 MHz ~ Fo $\pm$ 35 MHz	dB	45	52	-
Temperature Coefficient	ppm/ $^{\circ}$ C	-	-0.036	-

**Notes :** (1) With Matching Network (Ref. Testing Environment Circuit as shown below).

Those impedances could be modified with different impedance values and/or structures, if necessary.

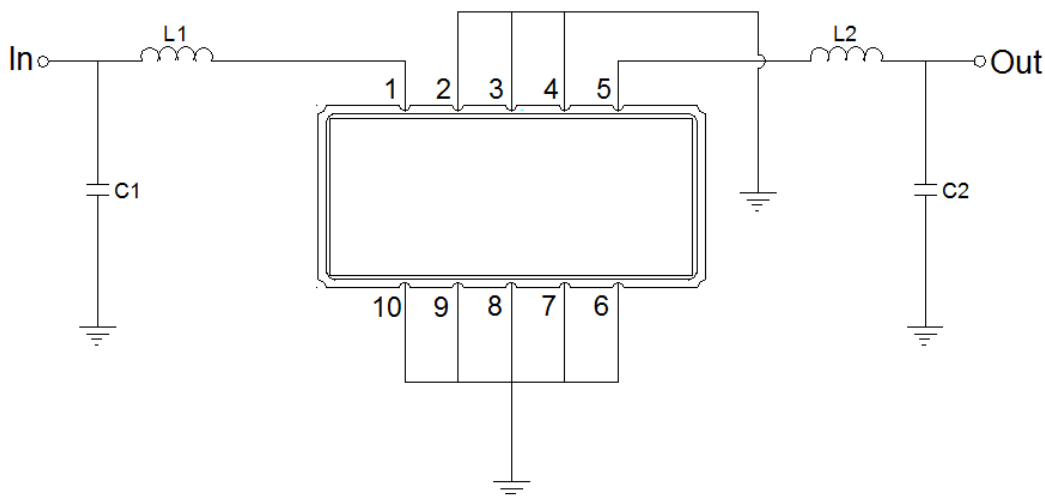
### Package Dimensions



Pin Description	
2,3,4,6,7,8,9,10	Ground
1	Input
5	Output

- ① SAWNICS: Brand
- ② SL071001A: Model Name
- ③ X : Date Code (Year)
- ④ Y : Date Code (Month)
- ⑤ Z : Date Code (Date)
- : Index Dot

### Testing Environment



Test Fixture & Values	
Input	L1 = (390+22)nH, C1=62pF
Output	L2 = (270+47)nH, C2=30pF
Source/Load Impedance	50 Ω

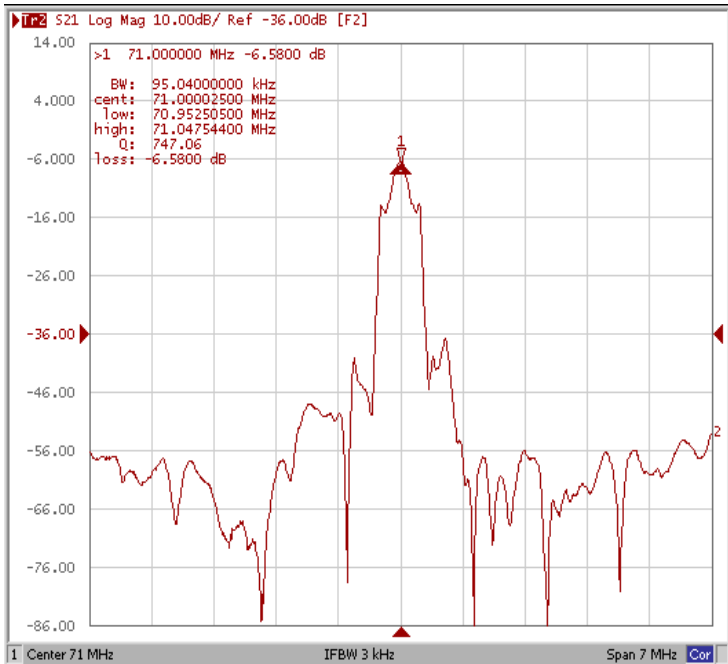


## □ Frequency Characteristics

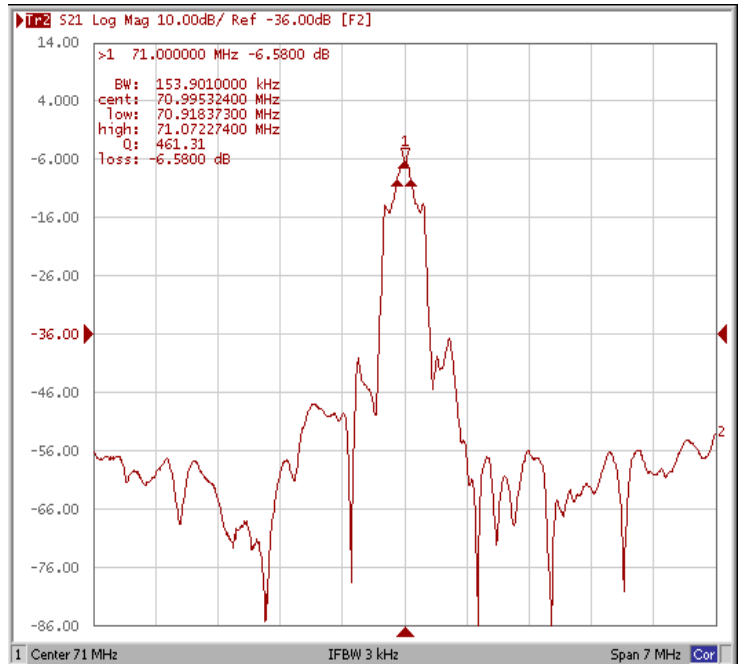
### Frequency Response

Operating Temperature : +25 °C

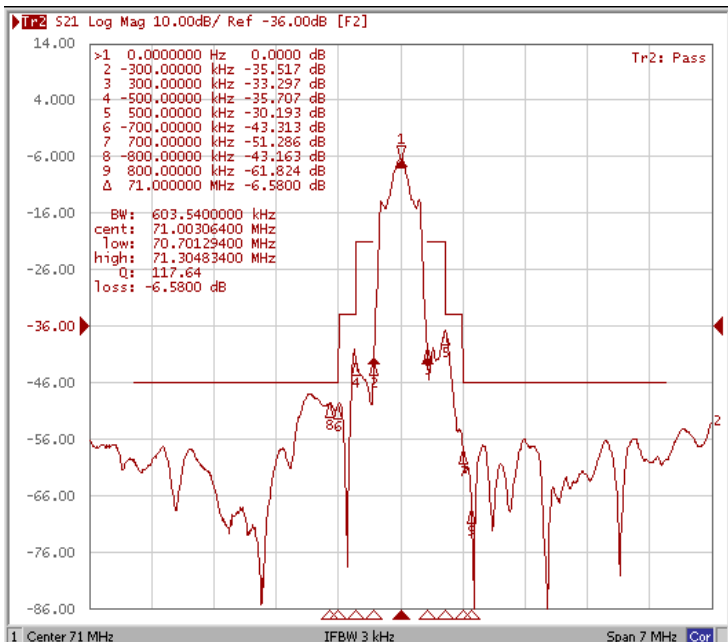
#### Bandwidth at -1.0 dB



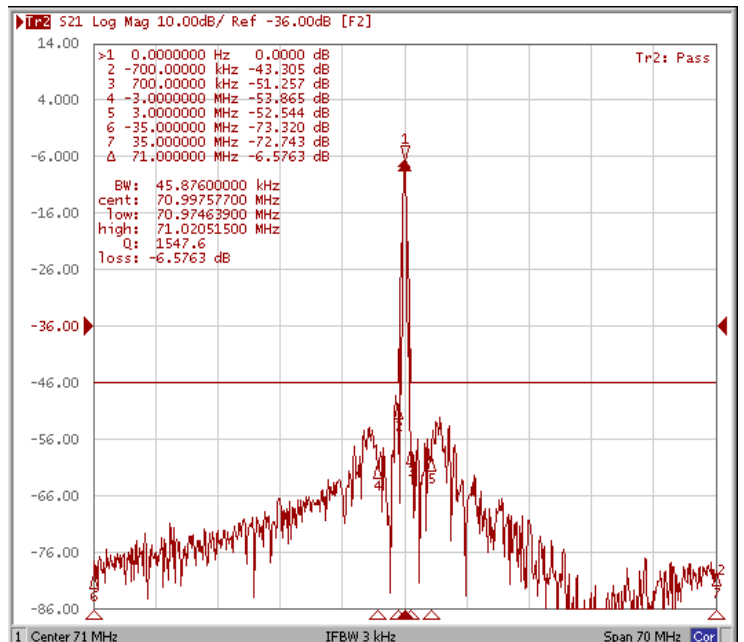
#### Bandwidth at -3.0 dB



#### Bandwidth at -35.0 dB



#### Wide - Band

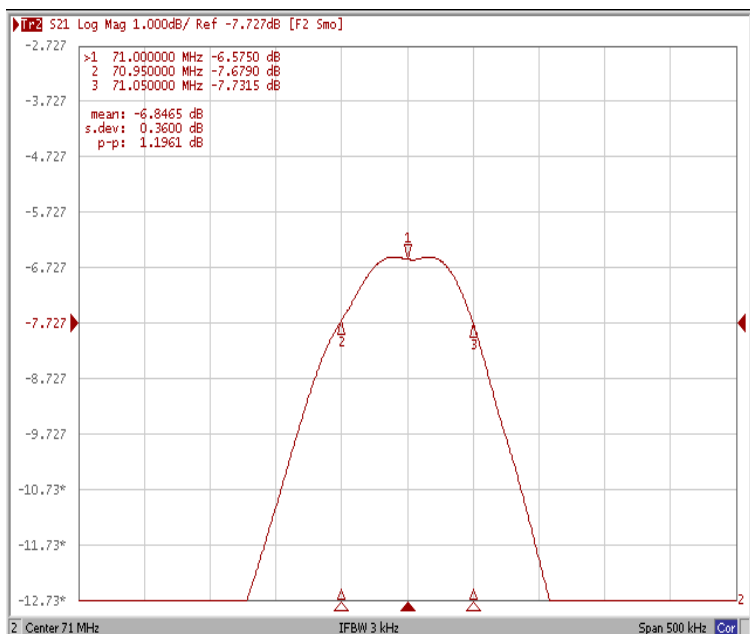




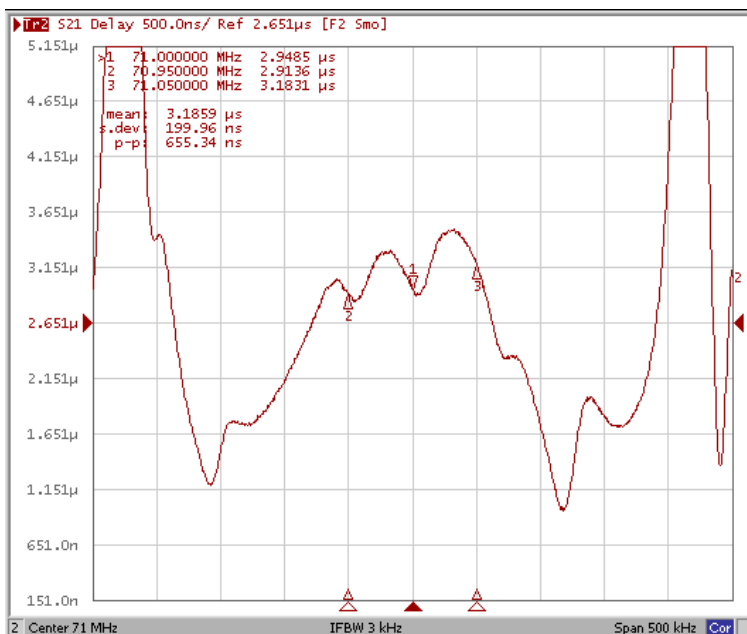
### Frequency Characteristics

#### Frequency Response

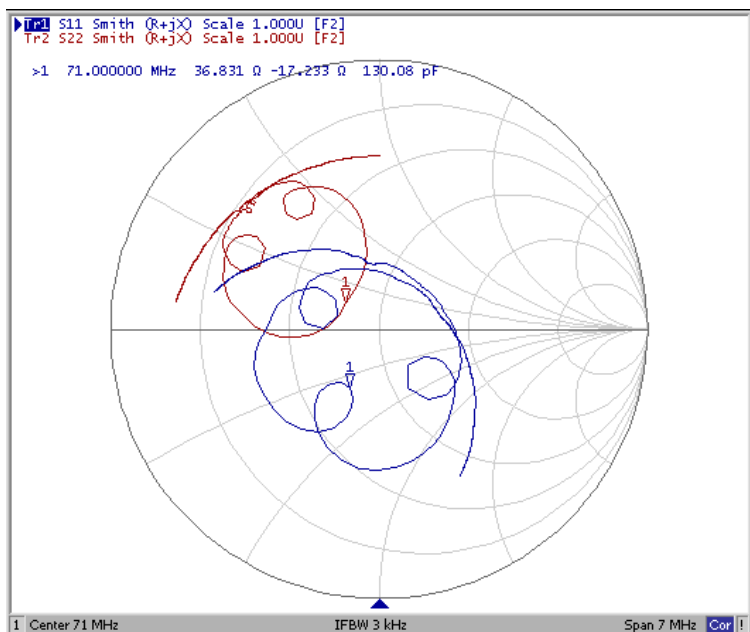
Ripple Variation Fo±50KHz



Group Delay Variation Fo±50KHz



Smith Chart



VSWR

