



Total Solution Provider in Saw Device

SL09207AV

92.16MHz IF SAW Filter
7.36MHz Bandwidth
Revision 0 : 15. April. 2009



- Electrical Characteristics
 - Package Dimensions
 - Testing Environment
 - Frequency Characteristics
-

SAWNICS Inc.

460 Cheonheung-ri, Seonggeo-eup, Cheonan-si, Chungcheongnam-do, 330-836 / Korea.
Tel: +82 41 550 9372 / Fax: +82 41 550 9399 / www.sawnics.com

□ Electrical Characteristics

Maximum Ratings

Parameters Description	Unit	Minimum	Typical	Maximum
Operating Temperature Range	°C	-20	-	70
Storage Temperature Range	°C	-40	-	85
Maximum DC Voltage	V	-	-	10
Maximum Input Power	dBm	-	-	10
Source Impedance (single ended) ⁽¹⁾	Ω	-	50	-
Load Impedance (single ended) ⁽¹⁾	Ω	-	50	-
Package type & size	V			
Length x Width	mm ²	-	13.3 x 6.5	-
Height	mm	-	-	1.8

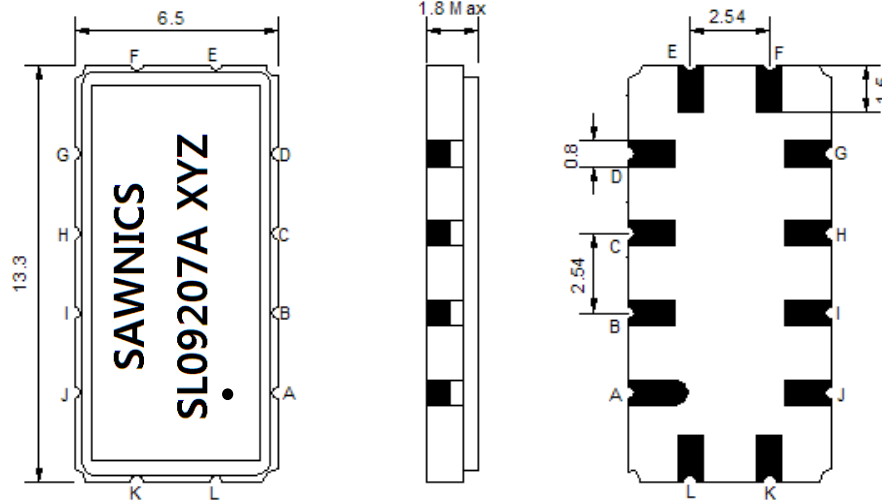
Electrical Specification

Parameters Description	Unit	Minimum	Typical	Maximum
Center Frequency (Fo)	MHz	-	92.16	-
Insertion Loss at Fo	dB	-	15.8	18.0
Group Delay Variation (89.16MHz~95.16MHz)	nsec	-	32	70
Absolute Delay Time at Fo	usec	-	1.44	-
Temperature Coefficient	ppm/°C	-	-20	-
Amplitude Ripple (89.16MHz~95.16MHz)	dB	-	0.3	0.7
Bandwidth at -1dB	MHz	7.00	7.36	-
Bandwidth at -40dB	MHz	-	10.03	10.50
Relative Attenuation				
@86.16MHz	dB	-	45	-
@98.16MHz	dB	-	45	-
Ultimate Rejection	dB	-	45	-

Notes : (1) With Matching Network (Ref. Testing Environment Circuit as shown below).

Those impedances could be modified with different impedance values and/or structures, if necessary.

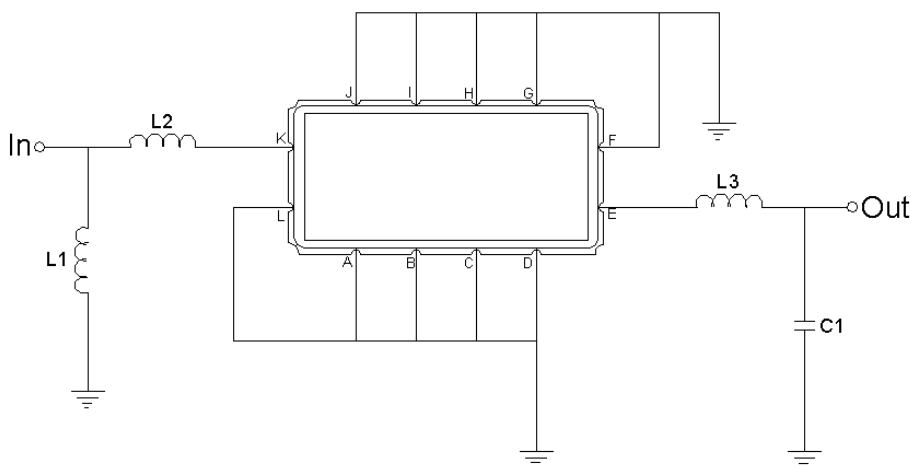
Package Dimensions



- ① SAWNICS: Brand
- ② SL09207A: Model Name
- ③ X : Date Code (Year)
- ④ Y : Date Code (Month)
- ⑤ Z : Date Code (Date)
- : Index Dot

Pin Description	
A, B, C, D, F, G, H, I, J, L	Ground
K	Input
E	Output

Testing Environment

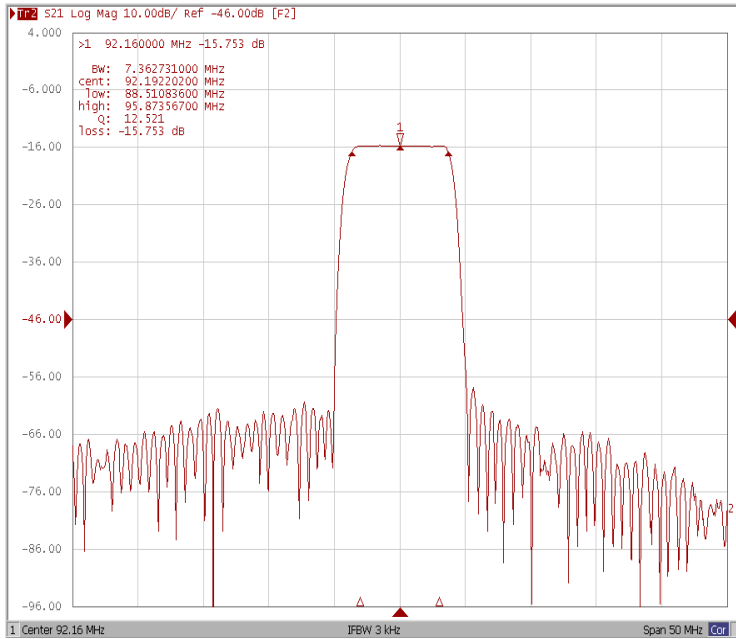


Test Fixture & Values	
Input	L1 = 47 nH, L2=39pF
Output	L3 = 150 nH, C1=30pF
Source/Load Impedance	50 Ω

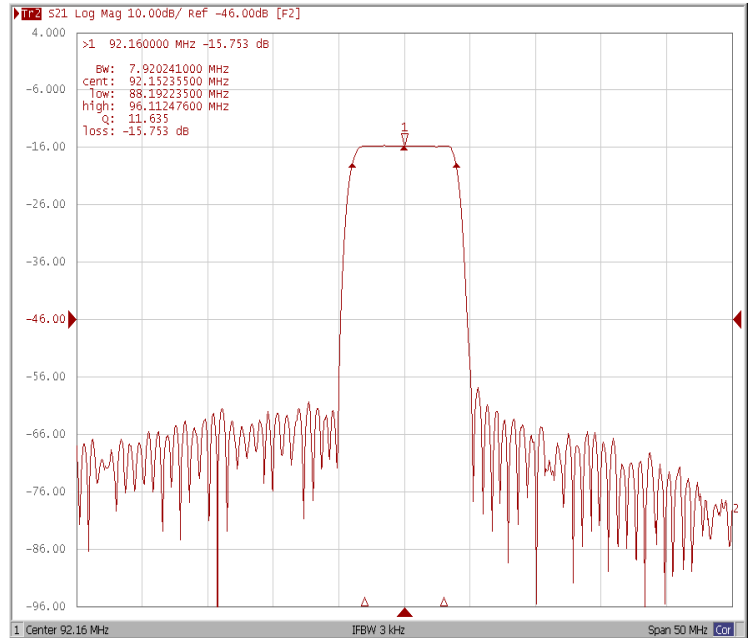
Frequency Characteristics

Frequency Response

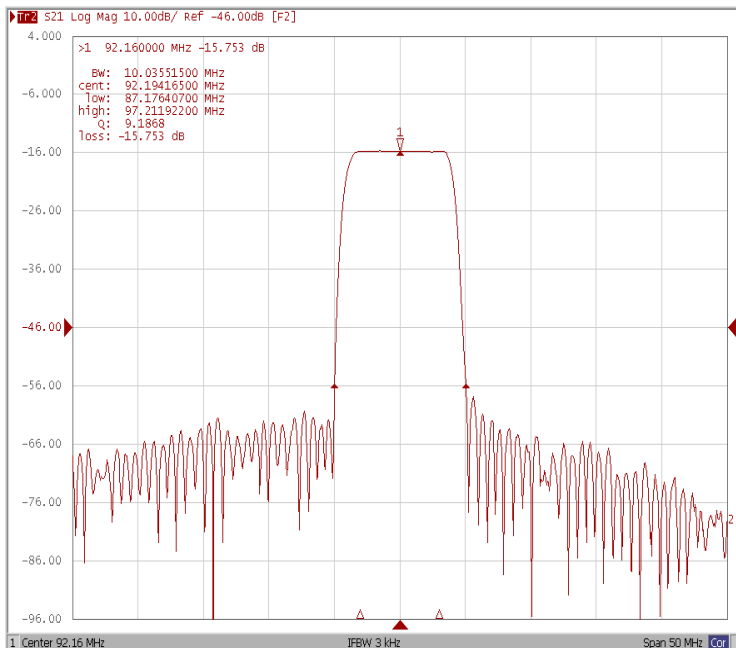
Bandwidth at -1.0 dB



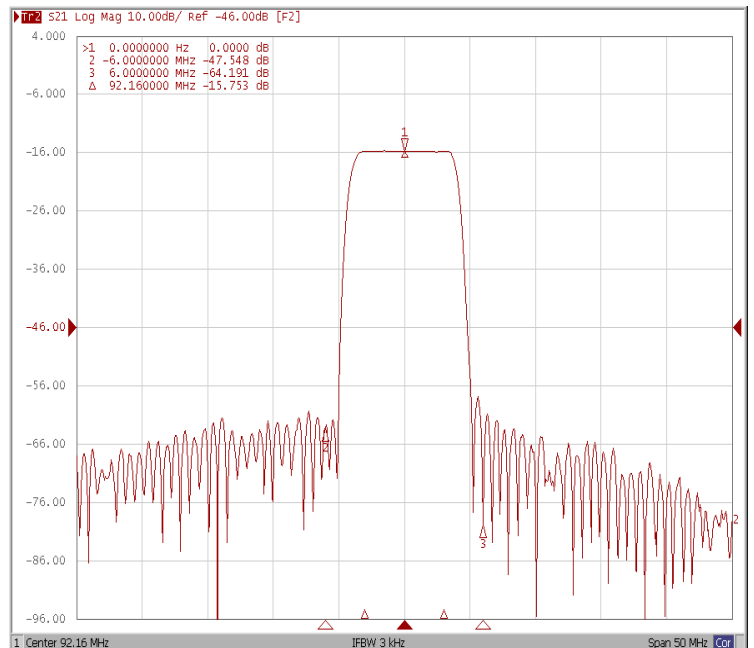
Bandwidth at -3.0 dB



Bandwidth at -40.0 dB



Relative Attenuation 86.16MHz / 98.16MHz

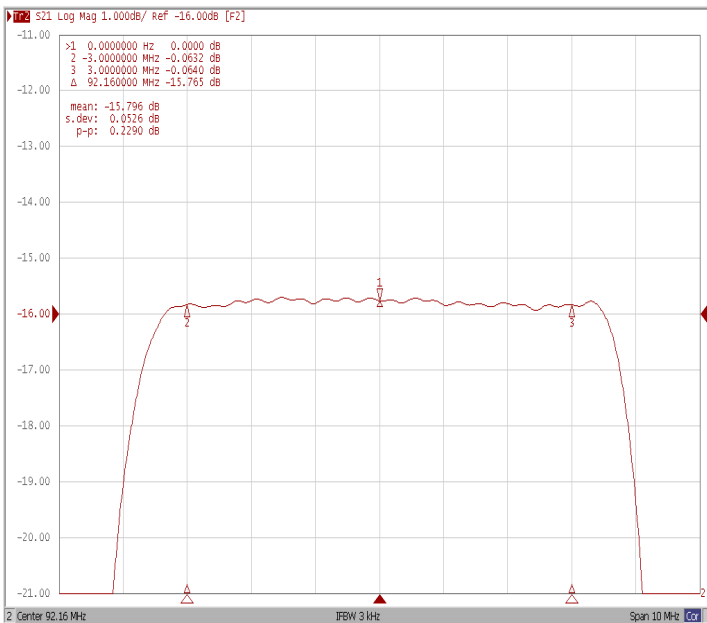




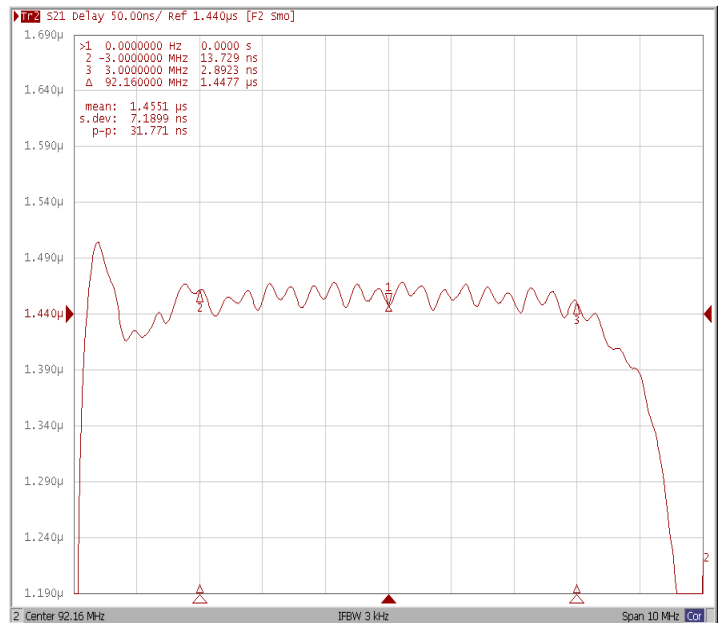
Frequency Characteristics

Frequency Response

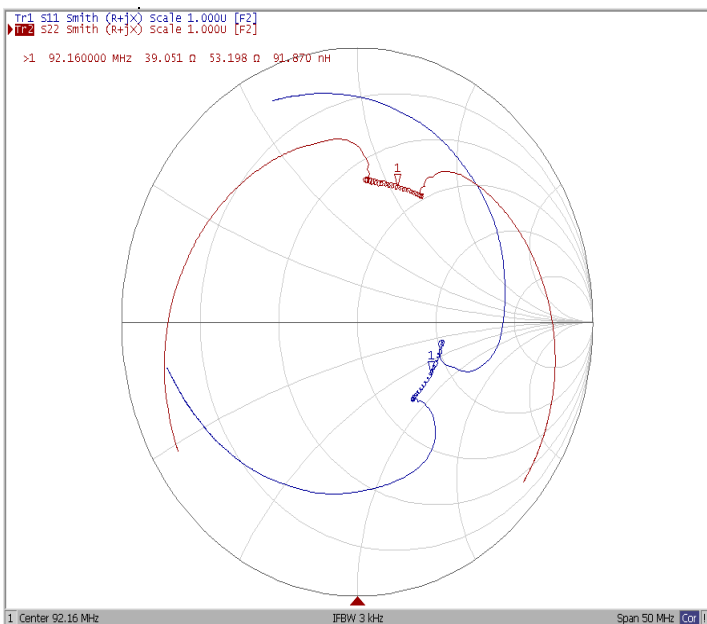
Ripple Variation(89.16MHz~95.16MHz)



Group Delay Variation(89.16MHz~95.16MHz)



Smith Chart



VSWR

