



Total Solution Provider in Saw Device

SL10723AV

107.52MHz IF SAW Filter
24.35MHz Bandwidth
Revision 1 : 17. MAR. 2009



- Electrical Characteristics
 - Package Dimensions
 - Testing Environment
 - Frequency Characteristics
-

SAWNICS Inc.

460 Cheonheung-ri, Seonggeo-eup, Cheonan-si, Chungcheongnam-do, 330-836 / Korea.
Tel: +82 41 550 9372 / Fax: +82 41 550 9399 / www.sawnics.com

□ Electrical Characteristics

Maximum Ratings

Parameters Description	Unit	Minimum	Typical	Maximum
Operating Temperature Range	°C	-40	-	85
Storage Temperature Range	°C	-40	-	85
Maximum DC Voltage	V	-	-	5
Maximum Input Power	dBm	-	-	18
Source Impedance (single ended) ⁽¹⁾	Ω	-	50	-
Load Impedance (single ended) ⁽¹⁾	Ω	-	50	-
Package type & size	V			
Length x Width	mm ²	-	13.3 x 6.5	-
Height	mm	-	-	1.8

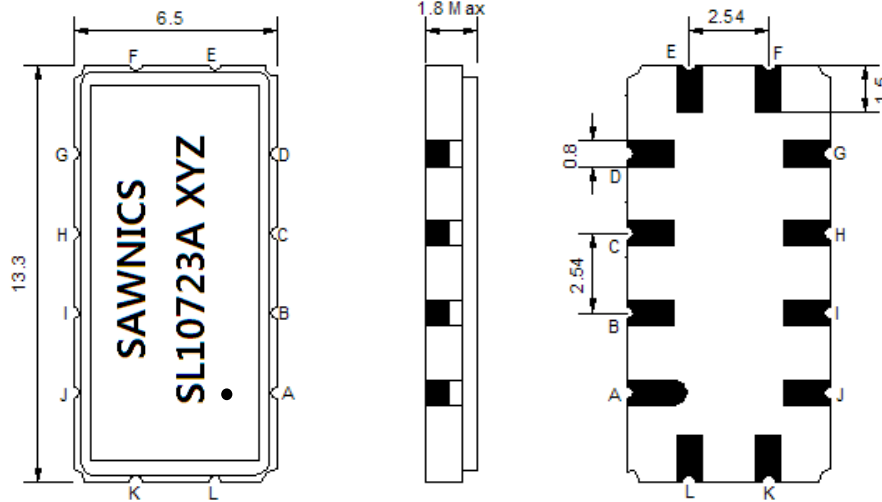
Electrical Specification

Parameters Description	Unit	Minimum	Typical	Maximum
Center Frequency (Fo)	MHz	-	107.52	-
Insertion Loss at Fo	dB	-	10.5	14.0
Temperature Coefficient	ppm/°C	-	-86	-
Amplitude Ripple Variation				
Fo -10MHz(-25 ~ +85°C)	dB _{p-p}		0.6	1.0
Fo +10MHz(-40 ~ -25°C)	dB _{p-p}		0.8	1.2
Group Delay Variation(Fo ±10 MHz)	nsec	-	50	100
Absolute Delay at Fo	nsec	600.0	663.3	780.0
Bandwidth at -3.0 dB	MHz	21.20	24.35	-
Relative Attenuation				
10MHz ~ 79.52MHz	dB	45	60	-
66.8MHz ~ 86.8MHz	dB	50	55	-
79.52MHz ~ 91.52MHz	dB	35	50	-
123.52MHz ~ 135.32MHz	dB	35	45	-
128.24MHz ~ 148.24MHz	dB	45	52	-
135.32MHz ~ 185.04MHz	dB	40	55	-
185.04MHz ~ 245.04MHz	dB	32	52	-
245.04MHz ~ 250.0MHz	dB	40	55	-
250.0MHz ~ 450MHz	dB	40	50	-
450MHz ~ 1000MHz	dB	35	45	-

Notes : (1) With Matching Network (Ref. Testing Environment Circuit as shown below).

Those impedances could be modified with different impedance values and/or structures, if necessary.

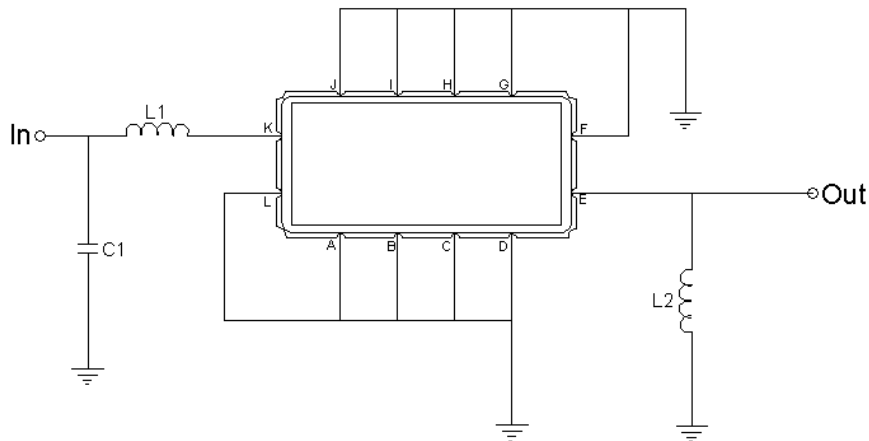
Package Dimensions



- ① SAWNICS: Brand
- ② SL10723AV: Model Name
- ③ X : Date Code (Year)
- ④ Y : Date Code (Month)
- ⑤ Z : Date Code (Date)
- : Index Dot

Pin Description	
A, B, C, D, F, G, H, I, J, L	Ground
K	Input
E	Output

Testing Environment

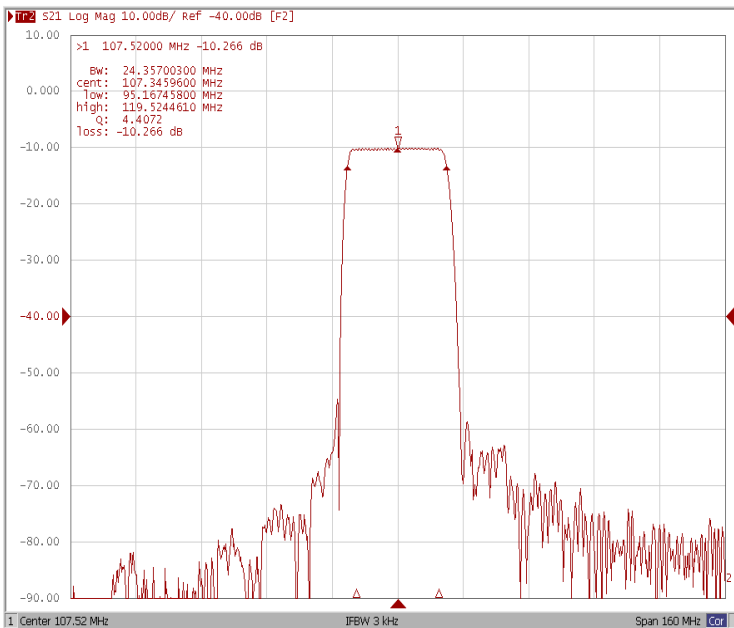


Test Fixture & Values	
Input	L1=56nH, C1=62pF
Output	L2=56nH
Source/Load Impedance	50 Ω

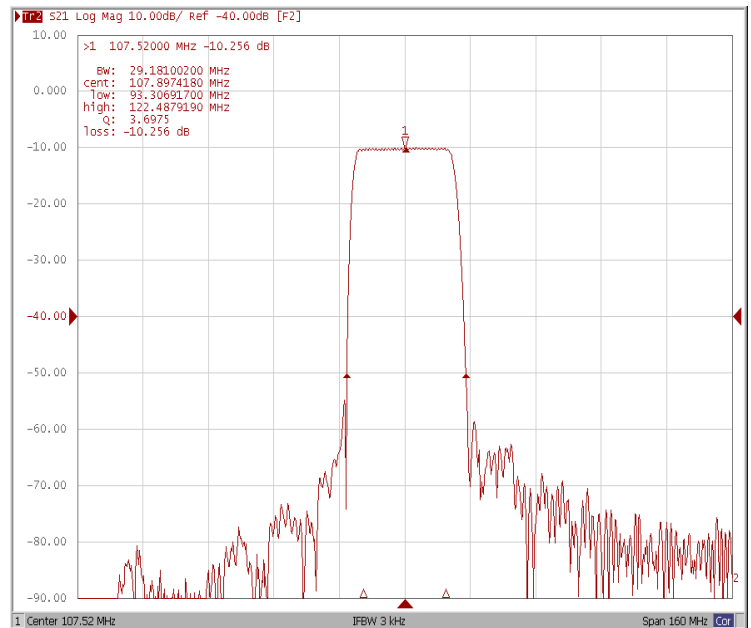
Frequency Characteristics

Frequency Response

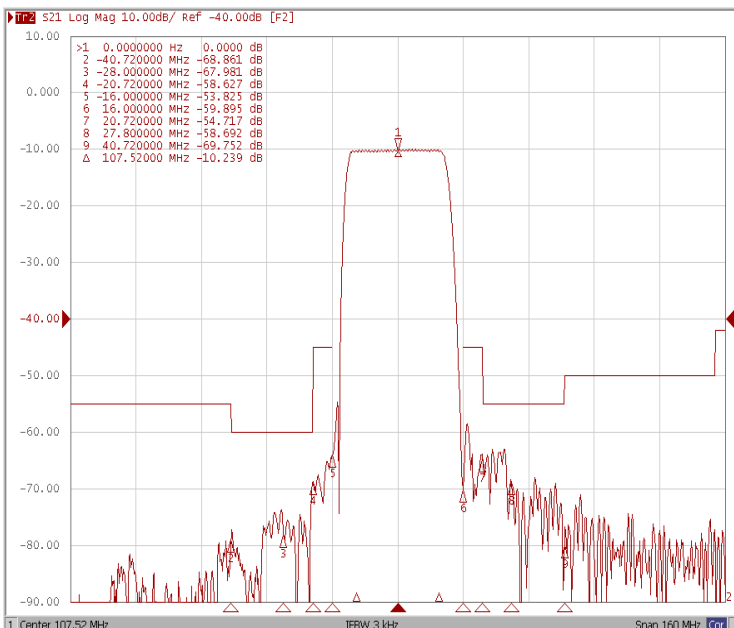
Bandwidth at -3.0 dB



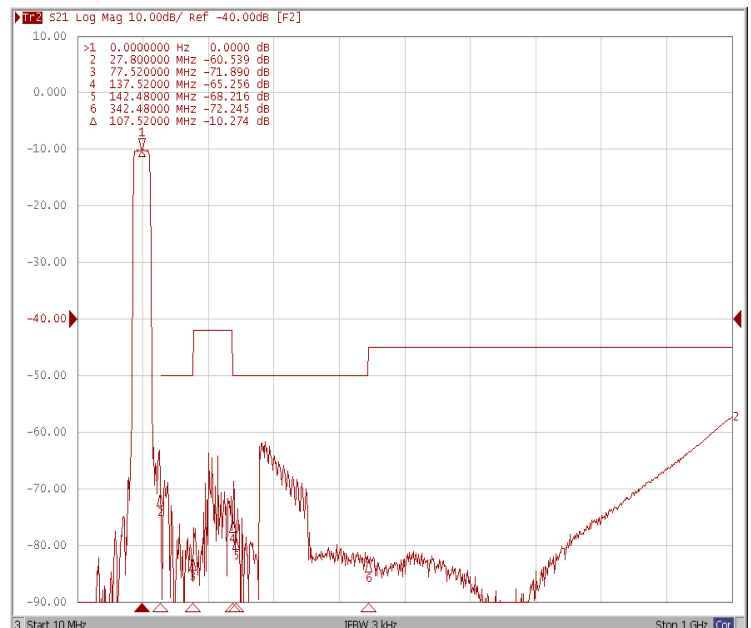
Bandwidth at -40.0 dB



Relative Attenuation



Relative Attenuation_Wide Band

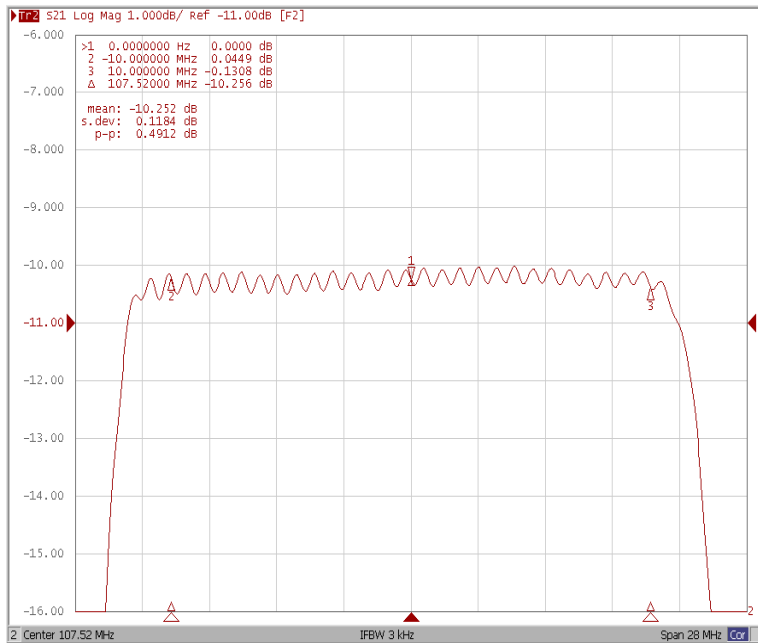




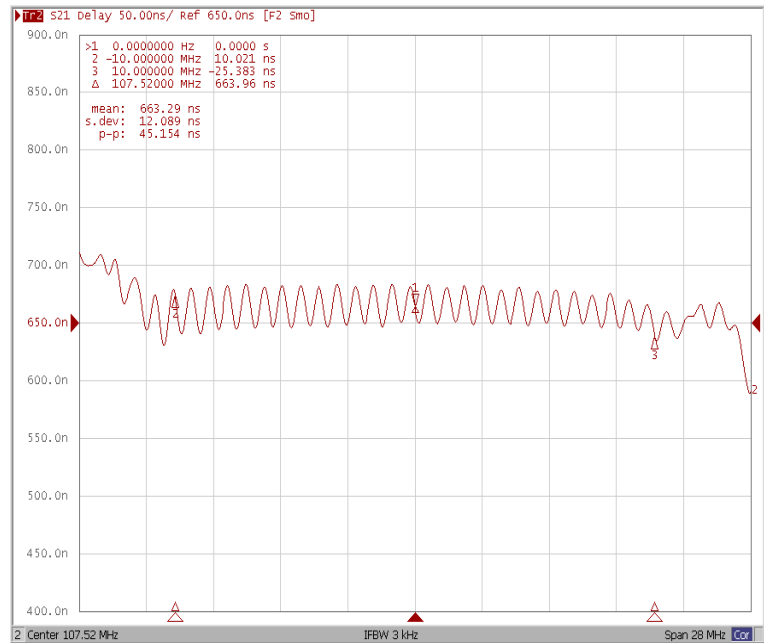
Frequency Characteristics

Frequency Response

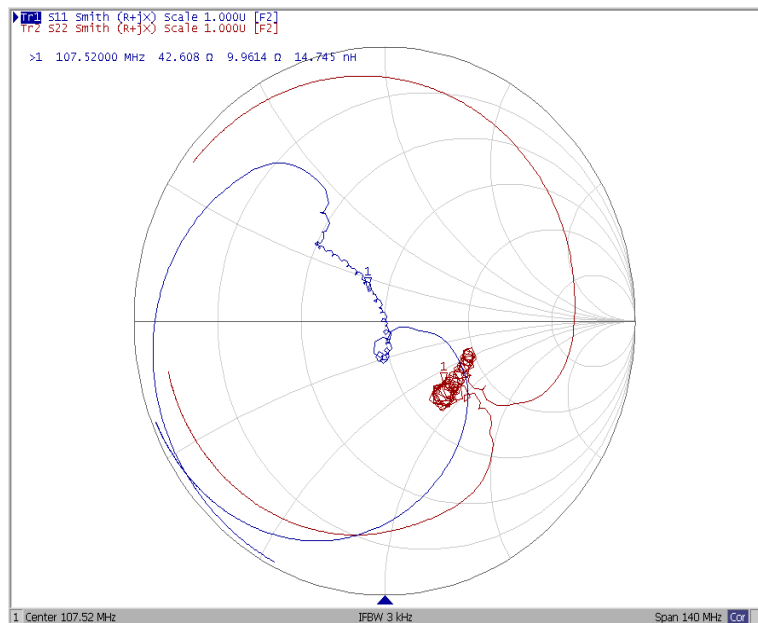
Ripple Variation Fo±10.0MHz



Group Delay Variation Fo±10.0MHz



Smith Chart



SWR

