



Total Solution Provider in Saw Device

SL11505AT

115.30 MHz IF SAW Filter
6.20 MHz Bandwidth
Revision 0: 28. April. 2009



- Electrical Characteristics
 - Package Dimensions
 - Testing Environment
 - Frequency Characteristics
-

SAWNICS Inc.

460 Cheonheung-ri, Seonggeo-eup, Cheonan-si, Chungcheongnam-do, 330-836 / Korea.
Tel: +82 41 550 9372 / Fax: +82 41 550 9399 / www.sawnics.com

□ Electrical Characteristics

Maximum Ratings

| Parameters Description | Unit | Minimum | Typical | Maximum |
|--|-----------------|---------|-----------|---------|
| Operating Temperature Range | °C | -5 | - | 70 |
| Storage Temperature Range | °C | -40 | - | 85 |
| Maximum DC Voltage | V | - | - | 10 |
| Maximum Input Power | dBm | - | - | 10 |
| Source Impedance (single ended) ⁽¹⁾ | Ω | - | 50 | - |
| Load Impedance (single ended) ⁽¹⁾ | Ω | - | 50 | - |
| Package type & size | T | | | |
| Length x Width | mm ² | - | 9.1 x 4.8 | - |
| Height | mm | - | - | 1.5 |

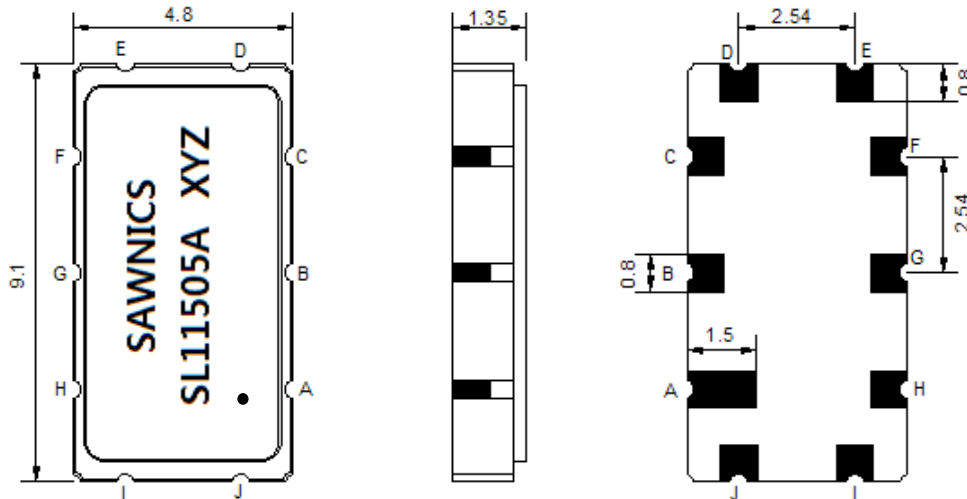
Electrical Specification

| Parameters Description | Unit | Minimum | Typical | Maximum |
|------------------------------------|--------|---------|---------|---------|
| Center Frequency (Fo) | MHz | - | 115.30 | - |
| Insertion Loss at Fo | dB | - | 13.20 | 15.00 |
| Temperature Coefficient | ppm/°C | - | -20 | - |
| Group Delay Variation at Fo±2.2MHz | nsec | - | 40 | 80 |
| Absolute Delay at Fo | usec | - | 0.84 | - |
| Passband Ripple at Fo±2.2MHz | dB | - | 0.30 | 0.70 |
| Bandwidth at -1dB | MHz | 5.00 | 6.20 | - |
| Bandwidth at -3dB | MHz | - | 7.00 | - |
| Bandwidth at -40dB | MHz | - | 10.18 | 10.80 |
| Ultimate Rejection | dB | 45 | 50 | - |

Notes : (1) With Matching Network (Ref. Testing Environment Circuit as shown below).

Those impedances could be modified with different impedance values and/or structures, if necessary.

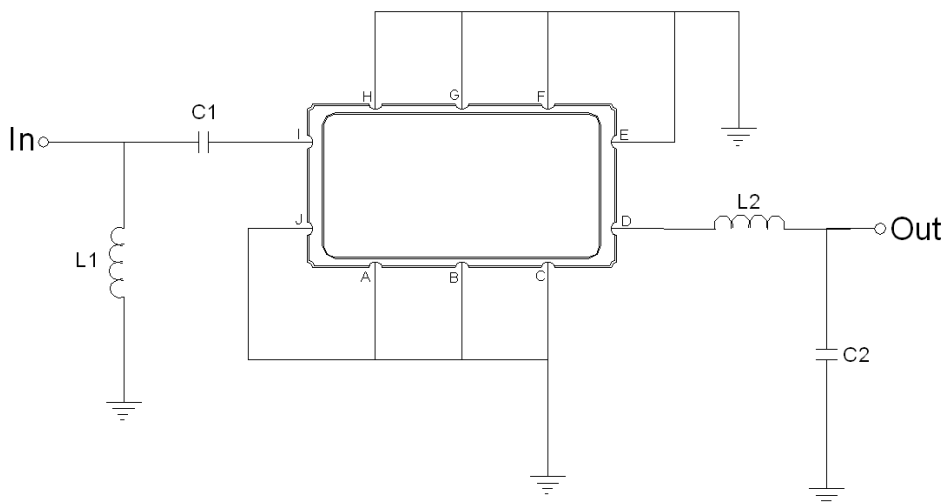
Package Dimensions



- ① SAWNICS: Brand
- ② SL11505A: Model Name
- ③ X : Date Code (Year)
- ④ Y : Date Code (Month)
- ⑤ Z : Date Code (Date)
- : Index Dot

| Pin Description | |
|------------------------|--------|
| A, B, C, E, F, G, H, J | Ground |
| I | Input |
| D | Output |

Testing Environment



| Test Fixture & Values | |
|-----------------------|--------------------------|
| Input | L1 = 27 nH , C1 = 200 pF |
| Output | L2 = 47 nH, C2 = 82 pF |
| Source/Load Impedance | 50 Ω |

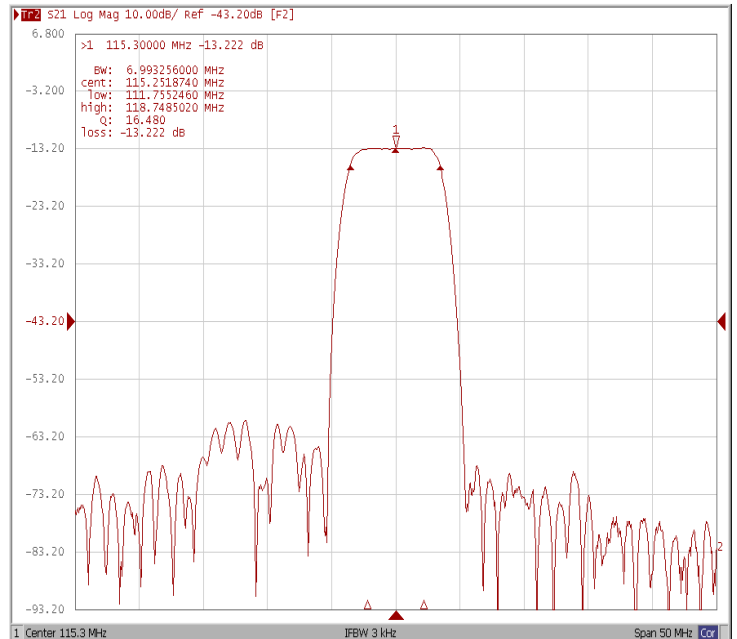
Frequency Characteristics

Frequency Response

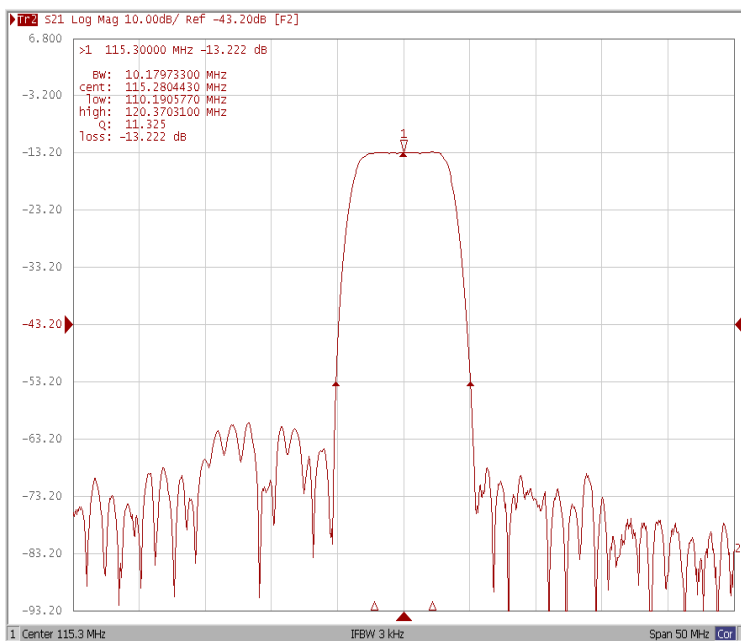
Bandwidth at -1.0 dB



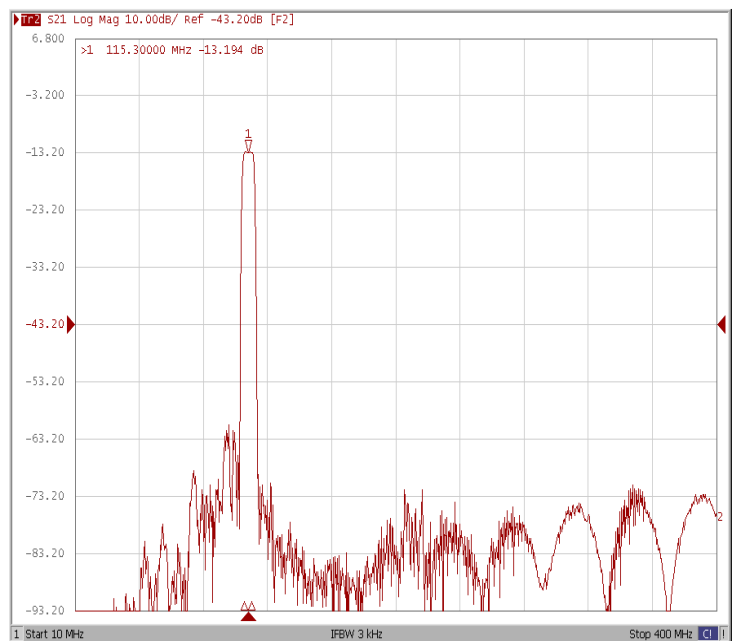
Bandwidth at -3.0 dB



Bandwidth at -40.0 dB



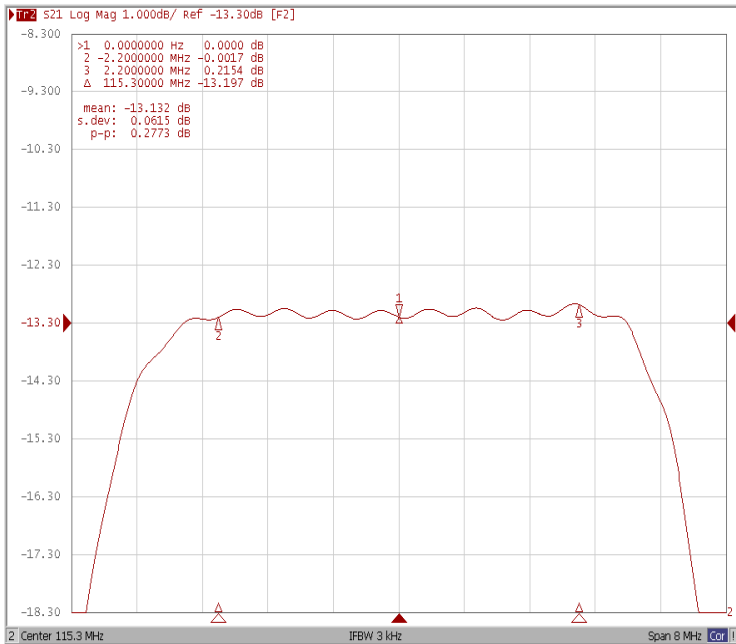
WIDE



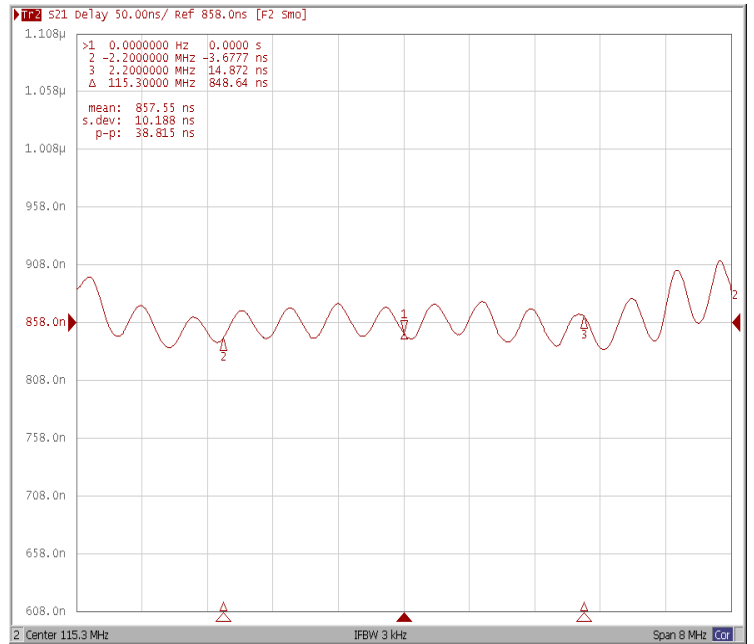


Frequency Response

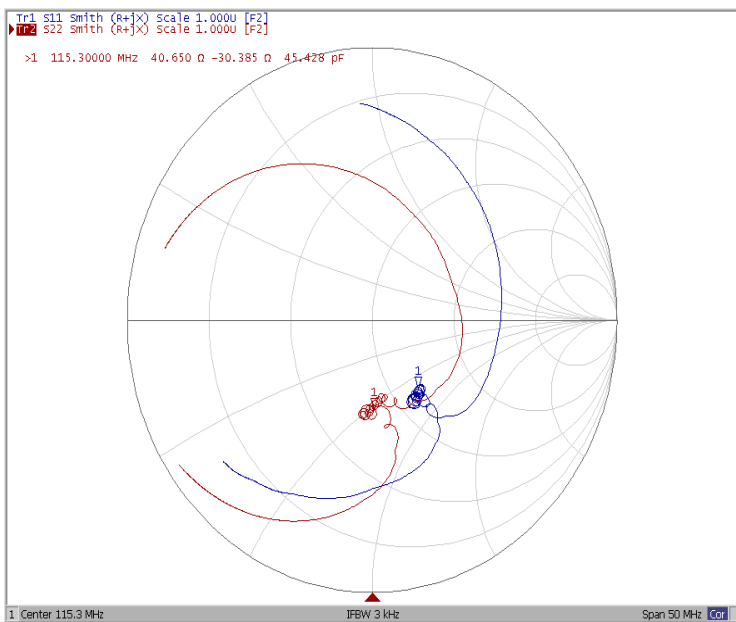
Ripple Variation Fo±2.2MHz



Group Delay Variation Fo±2.2MHz



Smith



SWR

