



*Total Solution Provider in Saw Device*

---

# SL137050AV

137.5MHz IF SAW Filter  
5.3MHz Bandwidth  
Revision 0 : 14. February. 2008



- Electrical Characteristics
  - Package Dimensions
  - Testing Environment
  - Frequency Characteristics
- 

**SAWNICS Inc.**

---

460 Cheonheung-ri, Seonggeo-eup, Cheonan-si, Chungcheongnam-do, 330-836 / Korea.  
Tel: +82 41 550 9372 / Fax: +82 41 550 9399 / [www.sawnics.com](http://www.sawnics.com)

## □ Electrical Characteristics

### Maximum Ratings

Parameters Description	Unit	Minimum	Typical	Maximum
Operating Temperature Range	°C	-30	-	85
Storage Temperature Range	°C	-40	-	85
Maximum DC Voltage	V	-	-	10
Maximum Input Power	dBm	-	-	10
Source Impedance (single ended) <sup>(1)</sup>	Ω	-	50	-
Load Impedance (single ended) <sup>(1)</sup>	Ω	-	50	-
Package type & size	V			
Length x Width	mm <sup>2</sup>	-	13.3 x 6.5	-
Height	mm	-	-	1.8

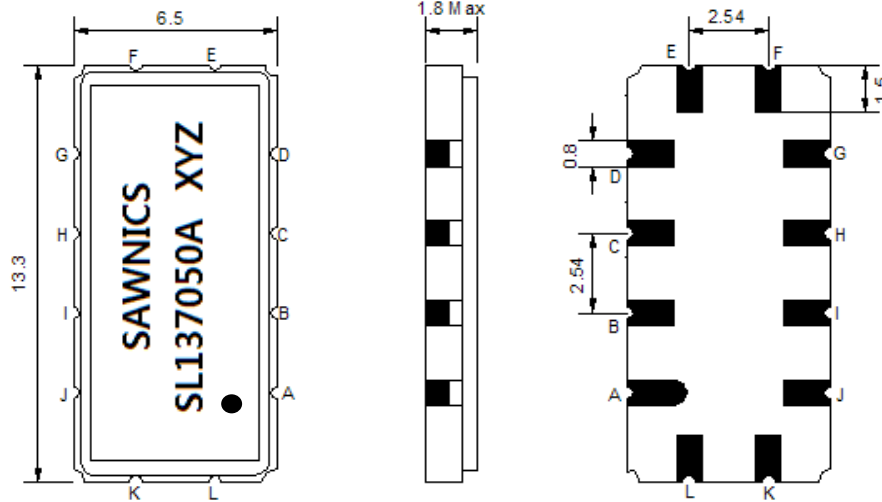
### Electrical Specification

Parameters Description	Unit	Minimum	Typical	Maximum
Center Frequency (Fo)	MHz	137.35	137.5	137.65
Insertion Loss at Fo	dB	-	13.0	15.0
Temperature Coefficient	ppm/°C	-	-18	-
Amplitude Ripple within fo ±2.2 MHz	dB <sub>p-p</sub>	-	0.3	0.8
Group Delay Variation within fo ±2.2 MHz	nsec	-	30	70
Absolute Delay at Fo	µsec	-	1.06	-
Bandwidth at -1.0 dB	MHz	5.1	5.3	-
Bandwidth at -3.0 dB	MHz	-	5.9	-
Bandwidth at -35.0 dB	MHz	-	8.2	8.6
<b>Relative Attenuation:</b>				
Lower Sidelobe	dB	45	48	-
Upper Sidelobe	dB	45	48	-

**Notes :** (1) With Matching Network (Ref. Testing Environment Circuit as shown below).

Those impedances could be modified with different impedance values and/or structures, if necessary.

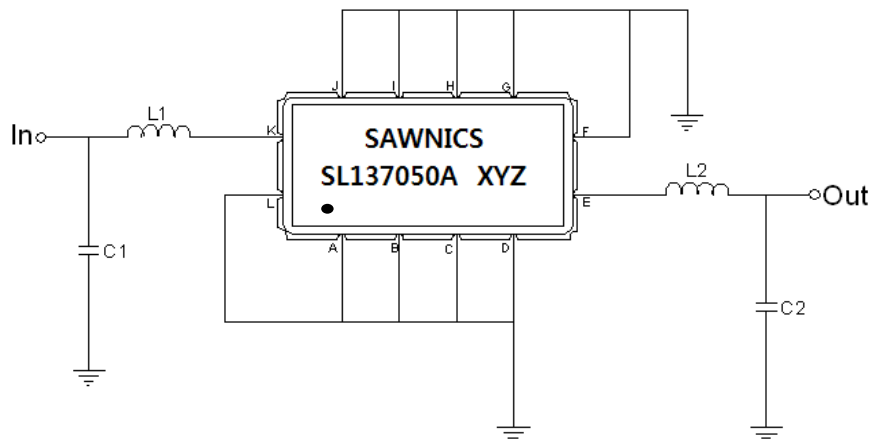
### Package Dimensions



- ① SAWNICS: Brand
- ② SL137050A: Model Name
- ③ X : Date Code (Year)
- ④ Y : Date Code (Month)
- ⑤ Z : Date Code (Date)
- : Index Dot

Pin Description	
A, B, C, D, F, G, H, I, J, L	Ground
K	Input
E	Output

### Testing Environment



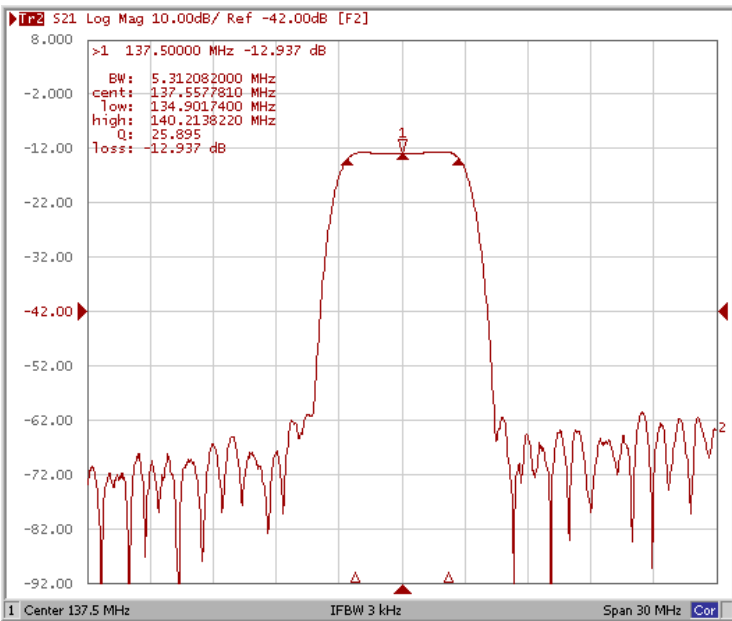
Test Fixture & Values	
Input	L1=39nH, C1=36pF
Output	L2=47nH, C2=27pF
Source/Load Impedance	50 Ω



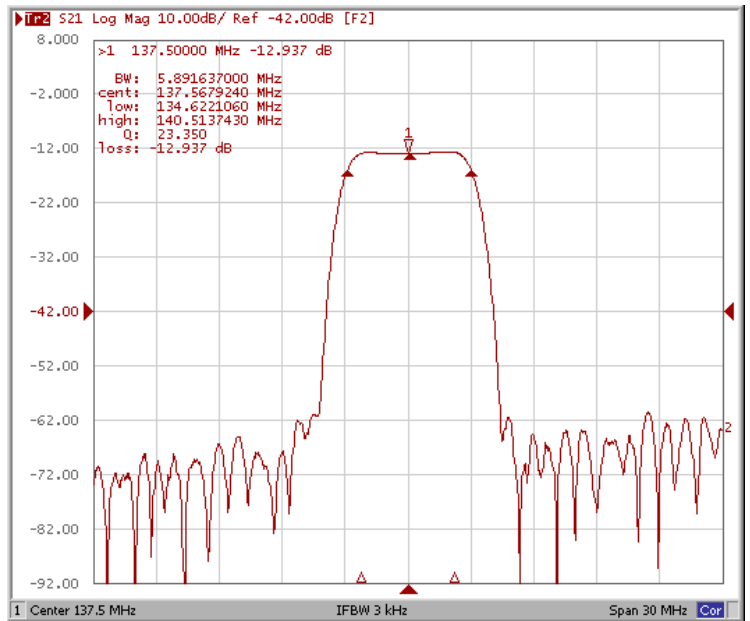
## □ Frequency Characteristics

### Frequency Response

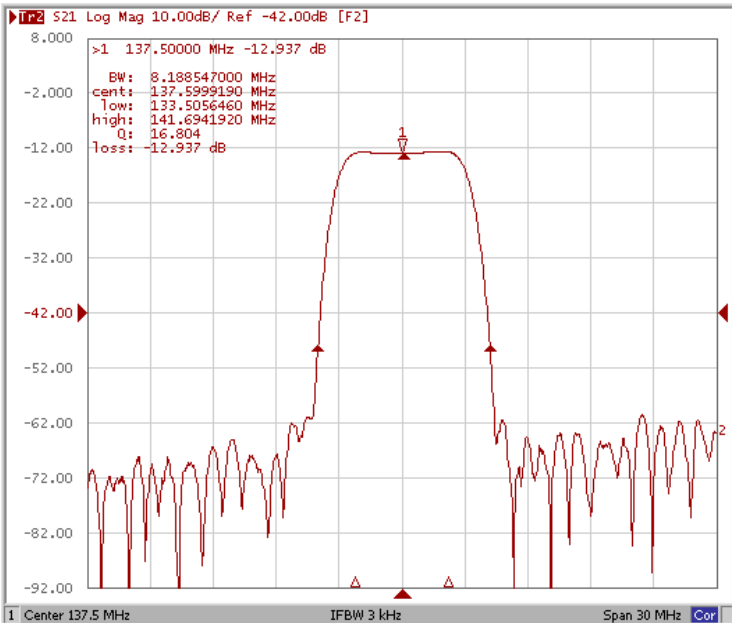
Bandwidth at -1.0 dB



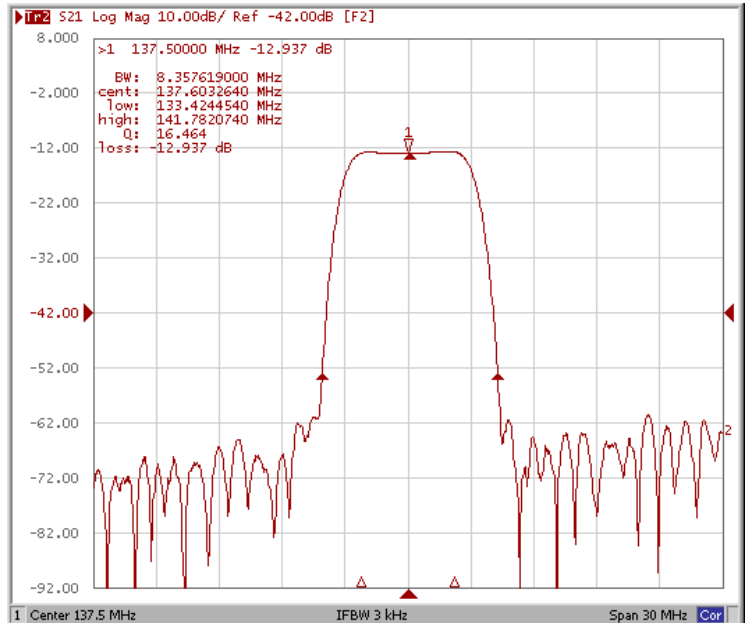
Bandwidth at -3.0 dB



Bandwidth at -35.0 dB



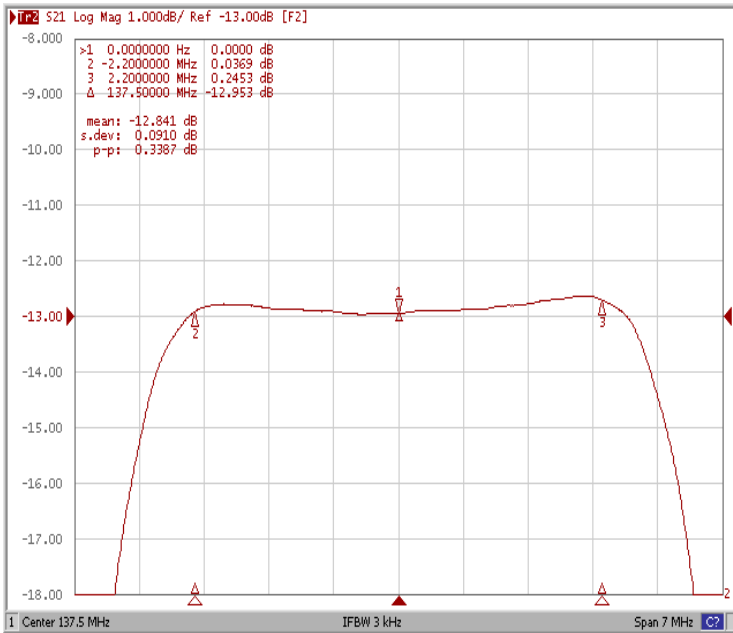
Bandwidth at -40.0 dB



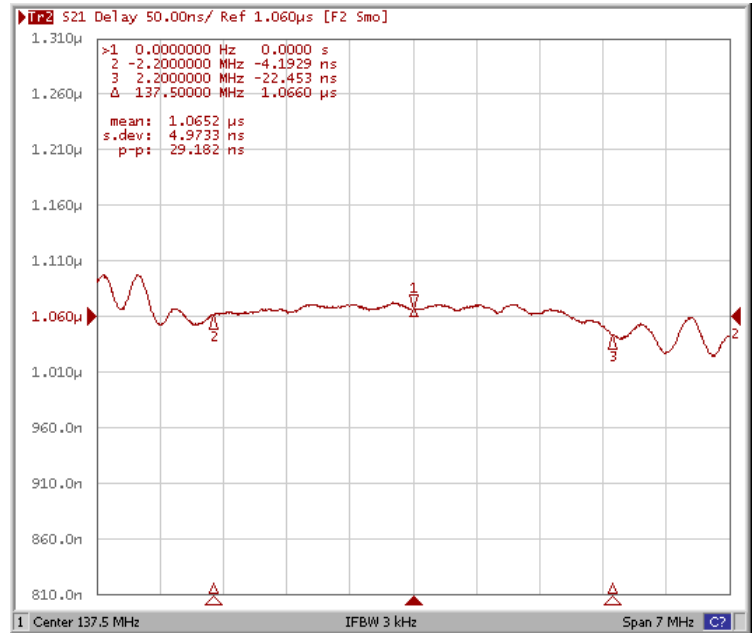
### Frequency Characteristics

#### Frequency Response

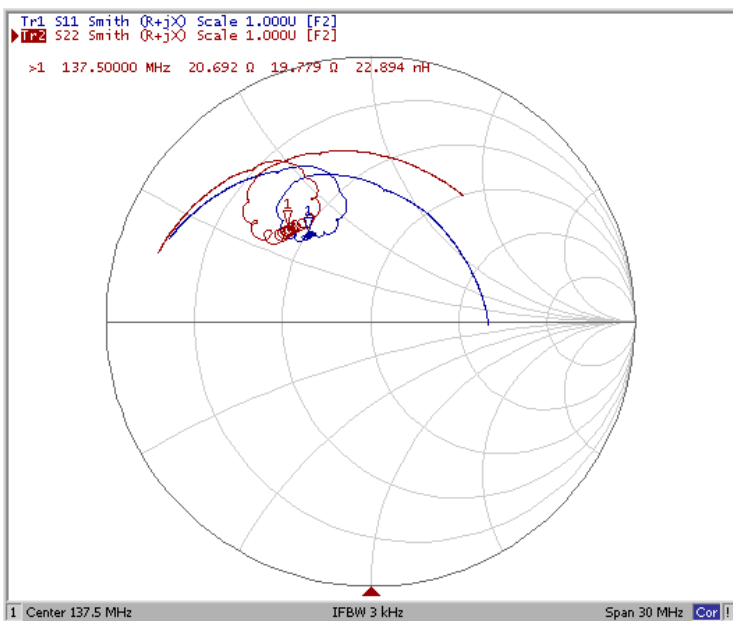
Ripple Variation Fo±2.2MHz



Group Delay Variation Fo±2.2MHz



Smith Chart



SWR

