



Total Solution Provider in Saw Device

SL14013AV

140.00 MHz IF SAW Filter

13.70 MHz Bandwidth

Revision 0: 03. February. 2012



- Electrical Characteristics
 - Package Dimensions
 - Testing Environment
 - Frequency Characteristics
-

SAWNICS Inc.

460 Cheonheung-ri, Seonggeo-eup, Cheonan-si, Chungcheongnam-do, 330-836 / Korea.
Tel: +82 41 550 9372 / Fax: +82 41 550 9399 / www.sawnics.com

**□ Electrical Characteristics****Maximum Ratings**

Parameters Description	Unit	Minimum	Typical	Maximum
Operation Temperature Range	°C	-	+25	-
Storage Temperature Range	°C	-40	-	+85
Maximum DC Voltage	V	-	-	10
Maximum Input Power	dBm	-	-	10
Source Impedance (single ended) ⁽¹⁾	Ω	-	50	-
Load Impedance (single ended) ⁽¹⁾	Ω	-	50	-
Package type & size	V			
Length x Width	mm ²	-	13.3 x 6.5	-
Height	mm	-	-	1.8

Electrical Specification

Parameters Description	Unit	Minimum	Typical	Maximum
Center Frequency (Fo)	MHz	139.60	140.00	140.40
Insertion Loss at Fo	dB	-	9.00	11.00
Group Delay Variation at Fo ± 5.00 MHz	nsec	-	44	100
Absolute Delay at Fo	usec	-	0.98	-
Passband Ripple Variation at Fo ± 5.00 MHz	dB	-	0.50	1.00
Bandwidth at -1dB	MHz	13.20	13.70	-
Bandwidth at -3dB	MHz	-	15.05	-
Bandwidth at -40dB	MHz	-	18.45	19.00
Ultimate Rejection	dB	40	45	-
Relative Attenuation				
Fo ±10.40MHz	dB	40	45	-
Temperature Coefficient	ppm/°C	-	-86	-

Notes : (1) With Matching Network (Ref. Testing Environment Circuit as shown below).

Those impedances could be modified with different impedance values and/or structures, if necessary.



□ Electrical Characteristics

Maximum Ratings

Parameters Description	Unit	Minimum	Typical	Maximum
Operation Temperature Range	°C	-40	-	+55
Storage Temperature Range	°C	-40	-	+85
Maximum DC Voltage	V	-	-	10
Maximum Input Power	dBm	-	-	10
Source Impedance (single ended) ⁽¹⁾	Ω	-	50	-
Load Impedance (single ended) ⁽¹⁾	Ω	-	50	-
Package type & size	V			
Length x Width	mm ²	-	13.3 x 6.5	-
Height	mm	-	-	1.8

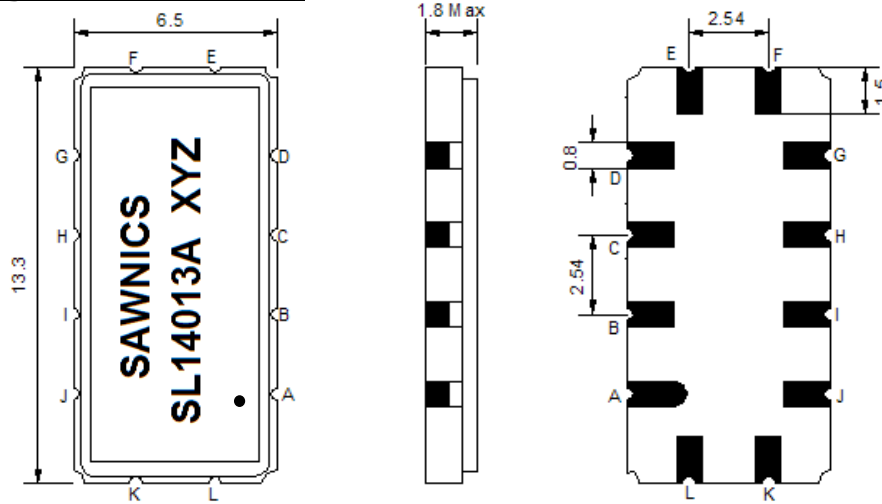
Electrical Specification

Parameters Description	Unit	Minimum	Typical	Maximum
Center Frequency (Fo)	MHz	-	140.00	-
Insertion Loss at Fo	dB	-	9.30	11.00
Group Delay Variation at Fo ± 5.00 MHz	nsec	-	50	100
Absolute Delay at Fo	usec	-	0.98	-
Passband Ripple Variation at Fo ± 5.00 MHz	dB	-	0.50	1.00
Bandwidth at -1dB	MHz	13.20	13.70	-
Bandwidth at -3dB	MHz	-	15.05	-
Bandwidth at -40dB	MHz	-	18.45	19.00
Ultimate Rejection	dB	40	45	-
Relative Attenuation				
Fo ±10.40MHz	dB	-	33	-
Temperature Coefficient	ppm/°C	-	-86	-

Notes : (1) With Matching Network (Ref. Testing Environment Circuit as shown below).

Those impedances could be modified with different impedance values and/or structures, if necessary.

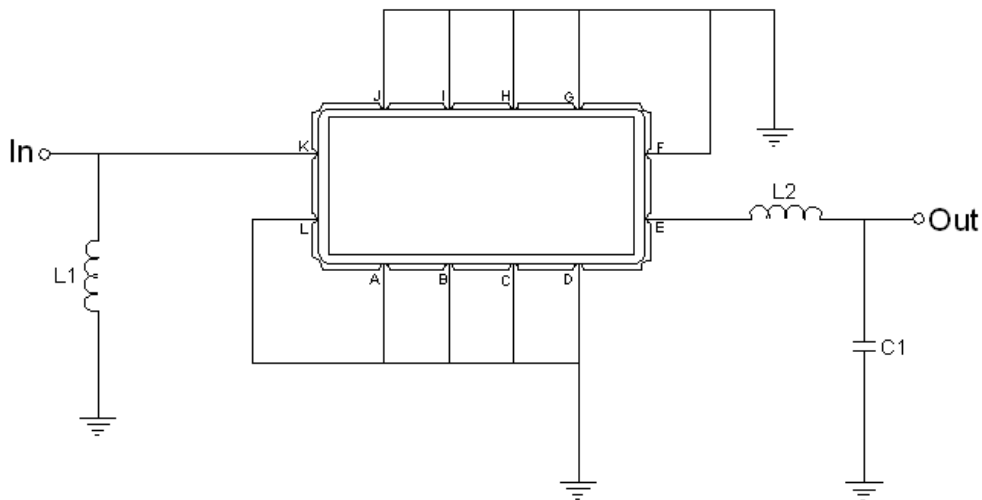
Package Dimensions



- ① SAWNICS: Brand
- ② SL14013A: Model Name
- ③ X : Date Code (Year)
- ④ Y : Date Code (Month)
- ⑤ Z : Date Code (Date)
- : Index Dot

Pin Description	
A, B, C, D, F, G, H, I, J, L	Ground
K	Input
E	Output

Testing Environment



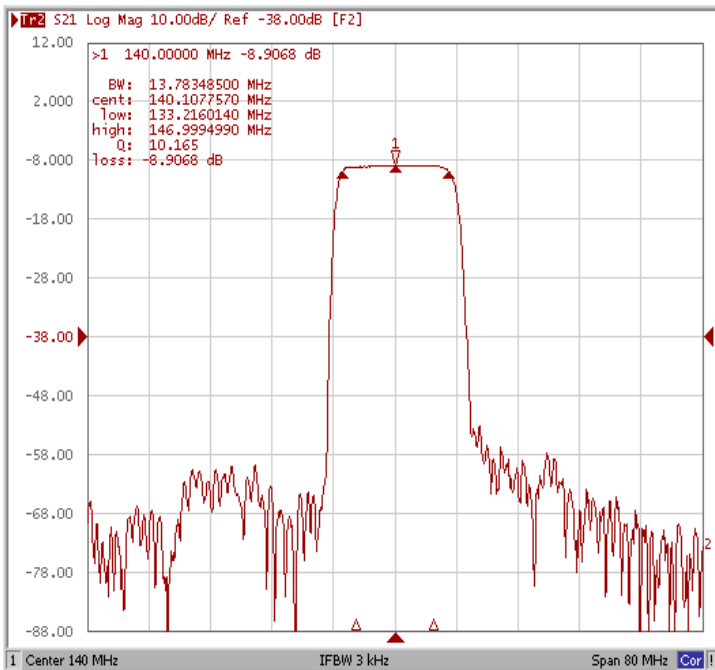
Test Fixture & Values	
Input	L1 = 39nH Q >40
Output	L2 = 47nH Q >40, C1=30pF
Source/Load Impedance	50 Ω

□ Frequency Characteristics

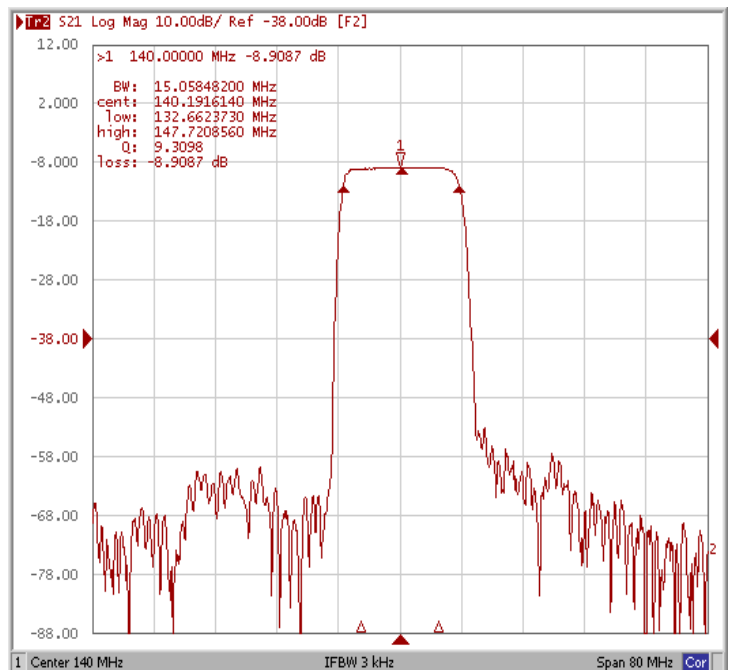
Frequency Response

Operating Temperature : +25 °C

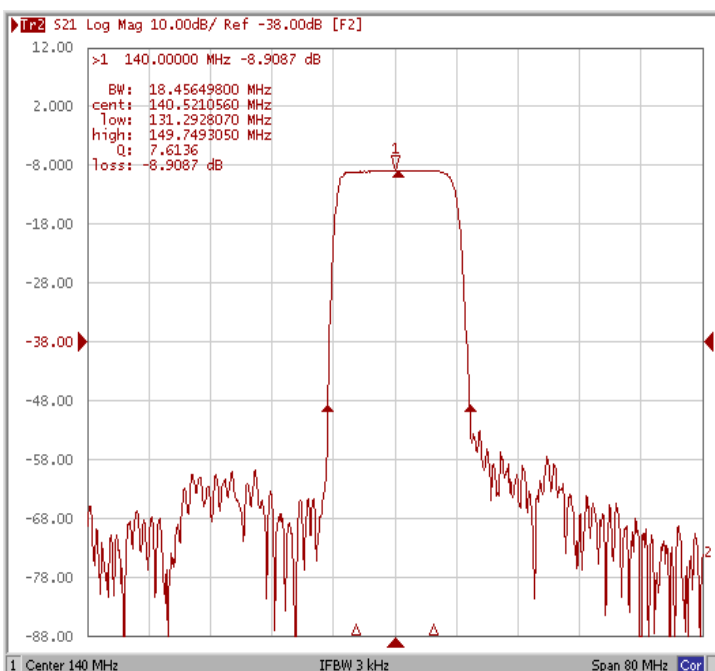
Bandwidth at -1.0 dB



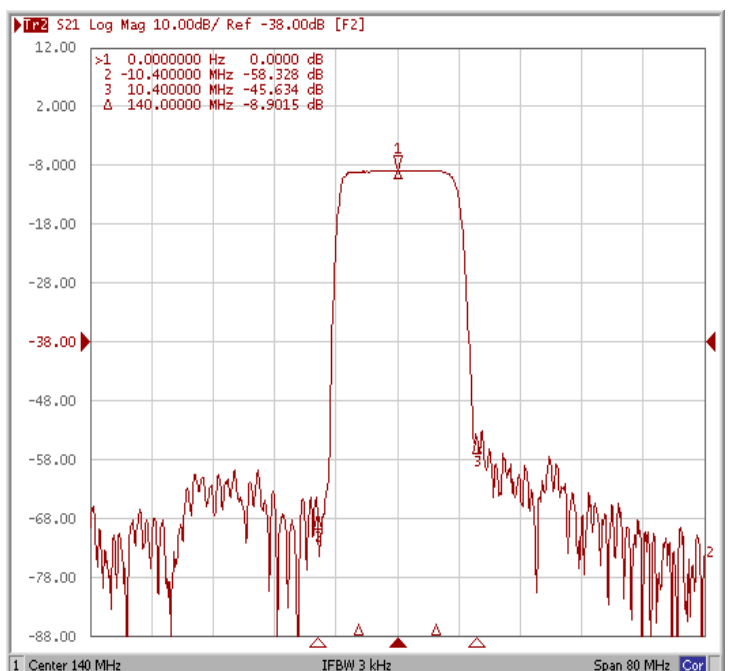
Bandwidth at -3.0 dB



Bandwidth at -40 dB



Relative Attenuation Fo±10.40MHz

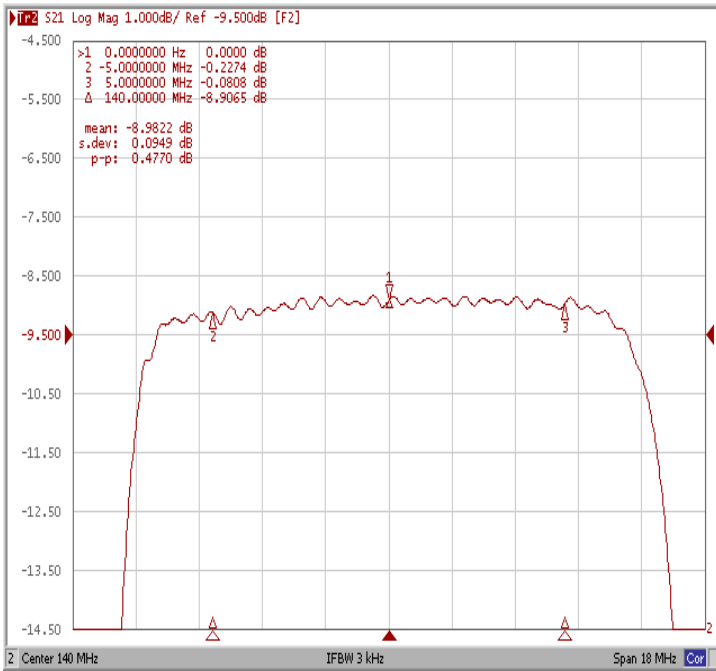




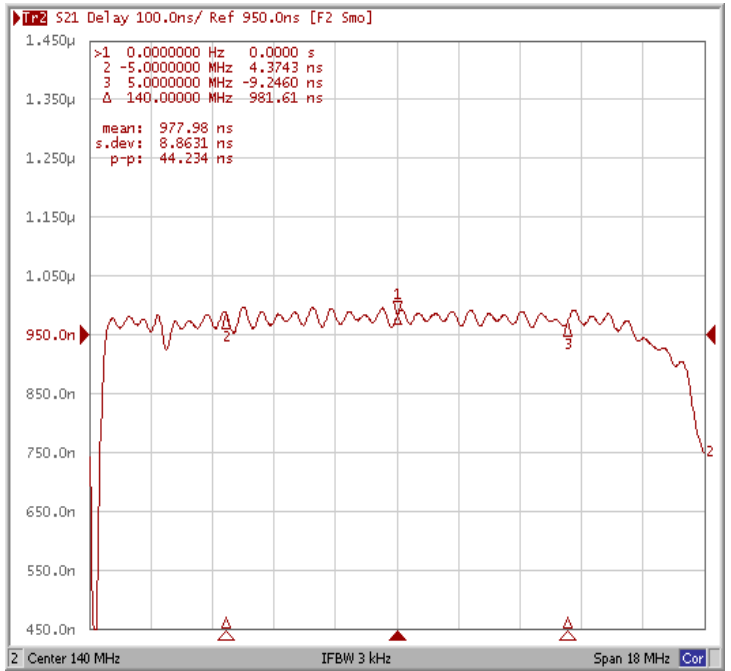
□ Frequency Characteristics

Frequency Response

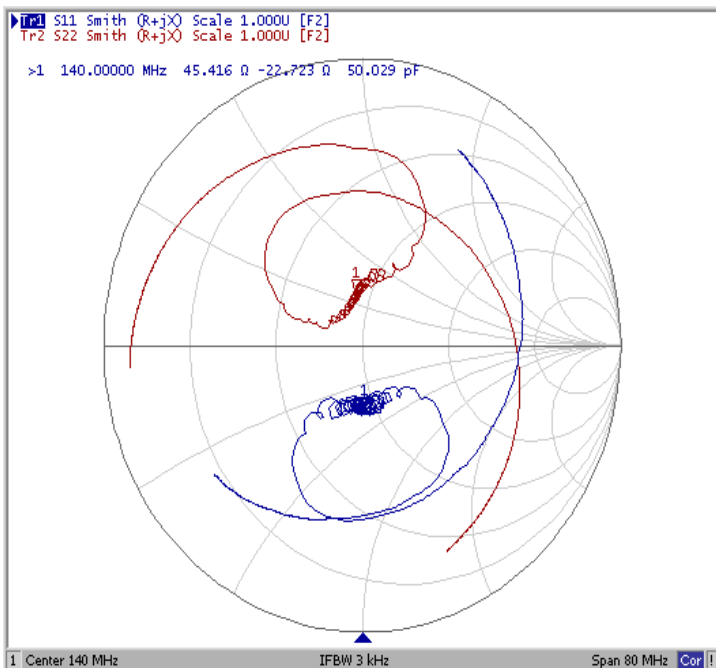
Ripple Variation Fo±5.00MHz



Group Delay Variation Fo±5.00MHz



Smith Chart



VSWR

