



Total Solution Provider in Saw Device

SL14710AV

147MHz IF SAW Filter

9.0 MHz Bandwidth

Revision 1: 29. Oct. 2007



-
- Electrical Characteristics
 - Package Dimensions
 - Testing Environment
 - Frequency Characteristics
-

SAWNICS Inc.

460 Cheonheung-ri, Seonggeo-eup, Cheonan-si, Chungcheongnam-do, 330-836 / Korea.
Tel: +82 41 550 9372 / Fax: +82 41 550 9399 / www.sawnics.com

□ Electrical Characteristics

Maximum Ratings

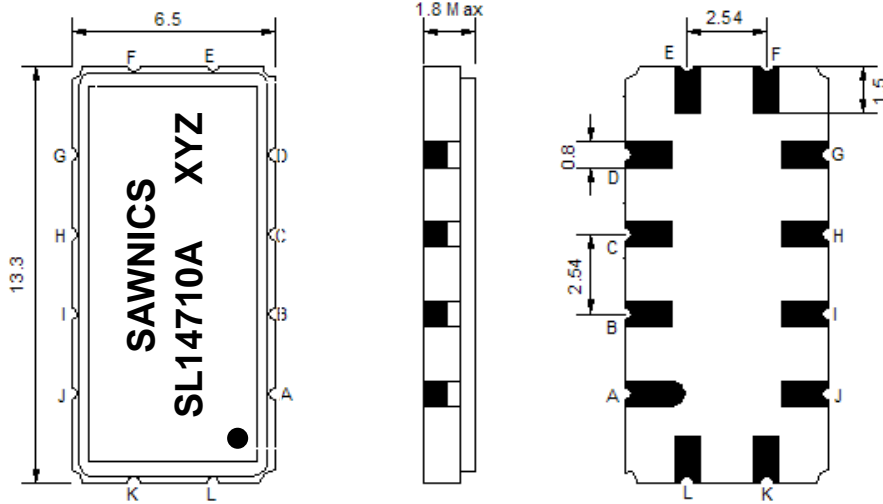
Parameters Description	Unit	Minimum	Typical	Maximum
Operation Temperature Range	°C	0	-	80
Storage Temperature Range	°C	-40	-	55
Maximum DC Voltage	V	-	-	10
Maximum Input Power	dBm	-	-	10
Source Impedance (single ended) ⁽¹⁾	Ω	-	50	-
Load Impedance (single ended) ⁽¹⁾	Ω	-	50	-
Package type & size	V			
Length x Width	mm ²	-	13.3 x 6.5	-
Height	mm	-	-	1.8

Electrical Specification

Parameters Description	Unit	Minimum	Typical	Maximum
Center Frequency (Fo)	MHz	146.6	147.0	147.4
Insertion Loss at Fo	dB	-	7.8	11.0
Amplitude Ripple Variation at Fo ± 4.0 MHz	dB _{p-p}	-	0.6	1.0
Group Delay Variation at Fo ± 4.0 MHz	nsec	-	60	150
Absolute Delay at Fo	µsec	-	0.93	-
Temperature Coefficient	ppm/°C	-	-89	-
Bandwidth at -1.0 dB	MHz	8.0	9.0	-
Bandwidth at -3.0 dB	MHz	9.5	10.1	-
Bandwidth at -35.0 dB	MHz	-	13.6	15.0
Relative Attenuation				
Lower Sidelobe	dB	42	50	-
Upper Sidelobe	dB	42	45	-

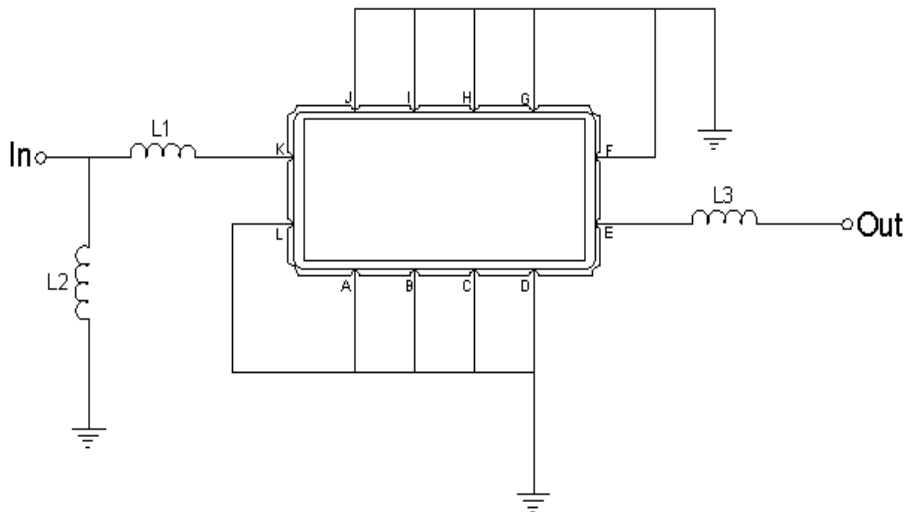
Notes : (1) With Matching Network (Ref. Testing Environment Circuit as shown below).
Those impedances could be modified with different impedance values and/or structures, if necessary.

Package Dimensions



Pin Description	
A, B, C, D, F, G, H, I, J, L	Ground
K	Input
E	Output

Testing Environment



Test Fixture & Values	
Input	L1=8.2 nH , L2=47 nH
Output	L3=22 nH
Source/Load Impedance	50 Ω

□ Frequency Characteristics

Frequency Response

