



*Total Solution Provider in Saw Device*

---

# SL35006AS2

350.00MHz IF SAW Filter  
6.50 MHz Bandwidth  
Revision 0: 18. July. 2012

---



- Electrical Characteristics
  - Package Dimensions
  - Testing Environment
  - Frequency Characteristics
- 

**SAWNICS Inc.**

---

460 Cheonheung-ri, Seonggeo-eup, Cheonan-si, Chungcheongnam-do, 330-836 / Korea.  
Tel: +82 41 550 9372 / Fax: +82 41 550 9399 / [www.sawnics.com](http://www.sawnics.com)

## □ Electrical Characteristics

### Maximum Ratings

Parameters Description	Unit	Minimum	Typical	Maximum
Operation Temperature Range	°C	-40	-	+85
Storage Temperature Range	°C	-40	-	+85
Maximum DC Voltage	V	-	-	-
Maximum Input Power	dBm	-	-	10
Source Impedance (Single-ended) <sup>(1)</sup>	Ω	-	50	-
Load Impedance (Single-ended) <sup>(1)</sup>	Ω	-	50	-
Package type & size	S2			
Length x Width	mm <sup>2</sup>	-	7.0 x 5.0	-
Height	mm	-	-	1.7

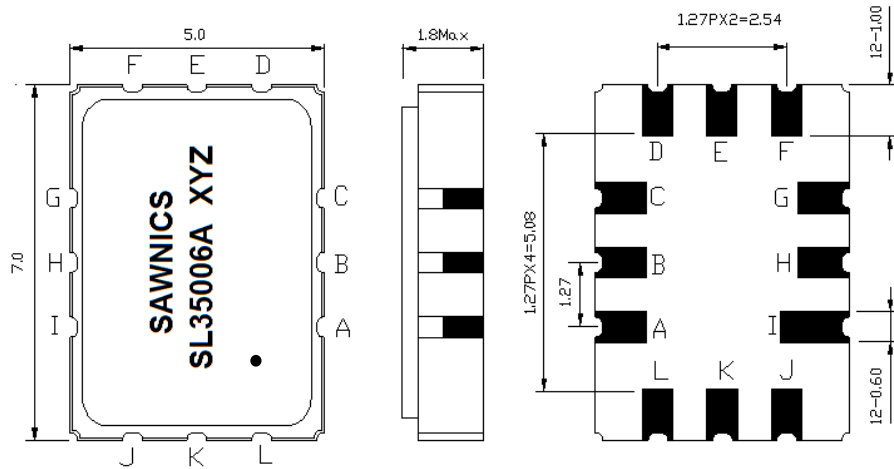
### Electrical Specification

Parameters Description	Unit	Minimum	Typical	Maximum
Center Frequency (Fo)	MHz	-	350.00	-
Maximum Insertion Loss at Fo	dB	-	11.2	12.5
Amplitude Ripple within Fo ± 2.5MHz	dB <sub>p-p</sub>	-	0.4	1.0
S11 Return Loss within Fo ± 2.5MHz	dB	-	9.0	-
Bandwidth at -1.0 dB	MHz	5.0	6.5	-
Bandwidth at -3.0 dB	MHz	-	7.9	-
Bandwidth at -35.0 dB	MHz	-	14.0	16.0
<b>Attenuation:(Reference level from minimum insertion loss)</b>				
245.0 ~ 320.0 MHz	dB	40	56	-
370.0 ~ 445.0 MHz	dB	40	56	-
Temperature Coefficient	ppm/°C	-	-18	-

**Notes :** (1) With Matching Network (Ref. Testing Environment Circuit as shown below).

Those impedances could be modified with different impedance values and/or structures, if necessary.

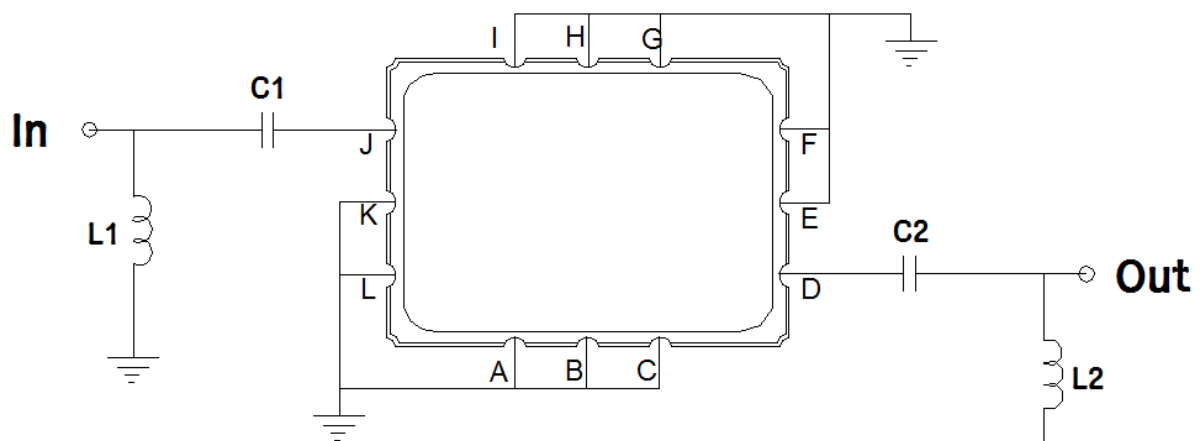
### Package Dimensions



- ① SAWNICS: Brand
- ② SL35006A: Model Name
- ③ X : Date Code (Year)
- ④ Y : Date Code (Month)
- ⑤ Z : Date Code (Date)
- : Index Dot

Pin Description	
A,B,C,E,F,G,H,I,K,L	Ground
J	Input
D	Output

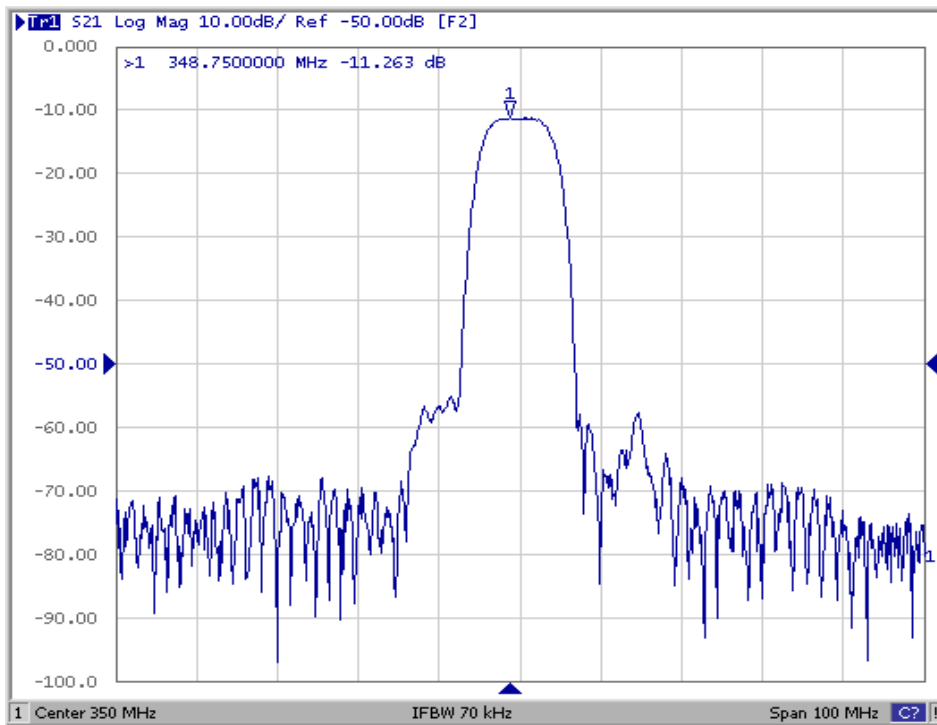
### Testing Environment



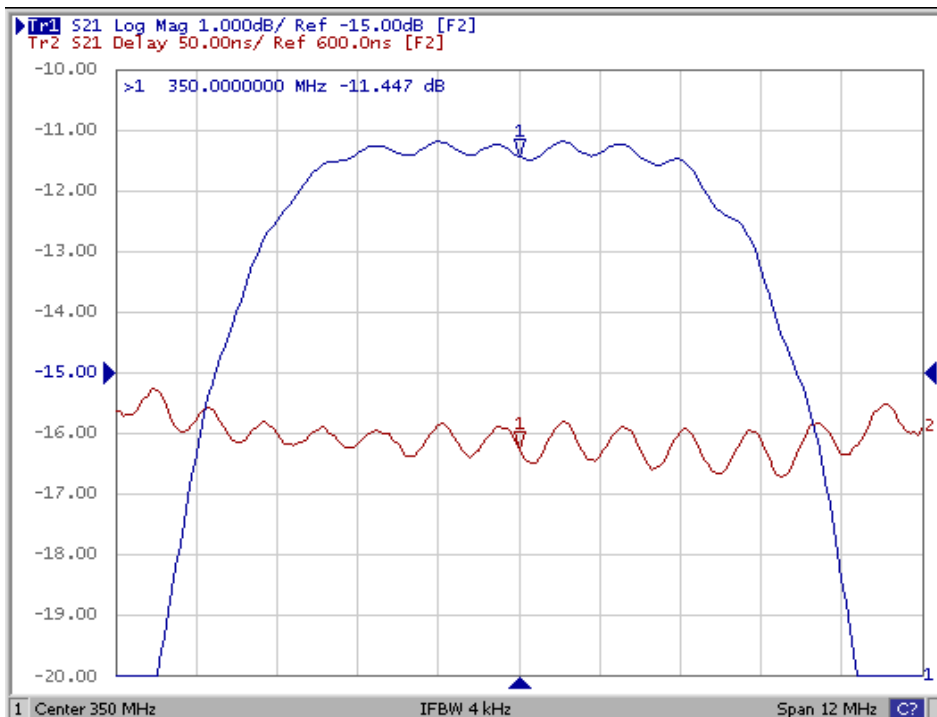
Test Fixture & Values	
Input	L1=27 nH, C1=57pF
Output	L2=18 nH, C2=68pF
Source/Load Impedance	50 Ω

### □ Frequency Characteristics

Frequency Response



Ripple Variation



**□ Frequency Characteristics**

**Frequency Response**

**S11 Smith Chart**

**S22 Smith Chart**

