



Total Solution Provider in Saw Device

SL3803AV

38.0 MHz IF SAW Filter
2.7 MHz Bandwidth
Revision 1: 29. Oct. 2007



-
- Electrical Characteristics
 - Package Dimensions
 - Testing Environment
 - Frequency Characteristics
-

SAWNICS Inc.

460 Cheonheung-ri, Seonggeo-eup, Cheonan-si, Chungcheongnam-do, 330-836 / Korea.
Tel: +82 41 550 9372 / Fax: +82 41 550 9399 / www.sawnics.com

□ Electrical Characteristics

Maximum Ratings

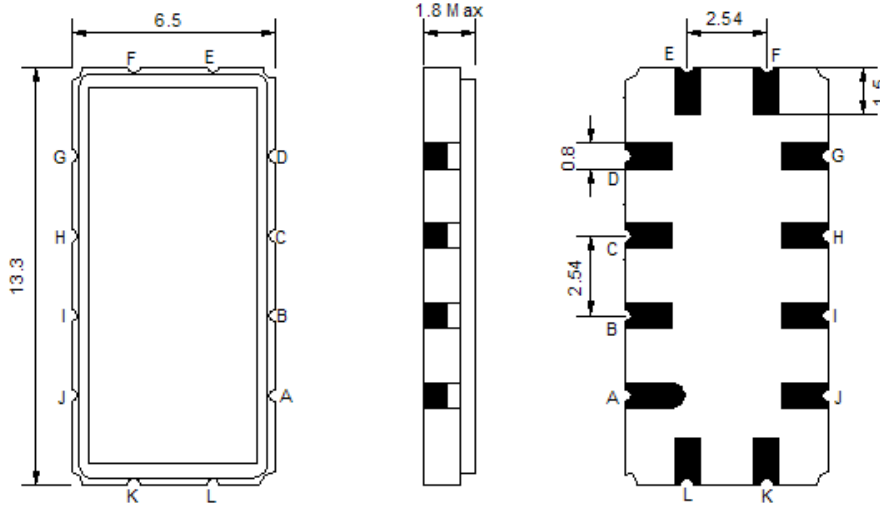
Parameters Description	Unit	Minimum	Typical	Maximum
Operation Temperature Range	°C	-40	-	80
Storage Temperature Range	°C	-45	-	85
Maximum DC Voltage	V	-	-	10
Maximum Input Power	dBm	-	-	10
Source Impedance (single ended) ⁽¹⁾	Ω	-	50	-
Load Impedance (single ended) ⁽¹⁾	Ω	-	50	-
Package type & size	V			
Length x Width	mm ²	-	13.3 x 6.5	-
Height	mm	-	-	1.8

Electrical Specification

Parameters Description	Unit	Minimum	Typical	Maximum
Center Frequency (Fo)	MHz	-	38.0	-
Insertion Loss at Fo	dB	-	11.5	15.0
Amplitude Ripple Variation	dB _{p-p}	-	0.5	1.0
Group Delay Variation	nsec	-	75	150
Absolute Delay at Fo	µsec	-	1.16	-
Temperature Coefficient	ppm/°C	-	-86	-
Bandwidth at -1.0 dB	MHz	-	2.7	-
Bandwidth at -3.0 dB	MHz	3.0	3.4	-
Bandwidth at -30.0 dB	MHz	-	5.6	5.9
Relative Attenuation				
Lower Sidelobe	dB	-	43	-
Upper Sidelobe	dB	-	43	-

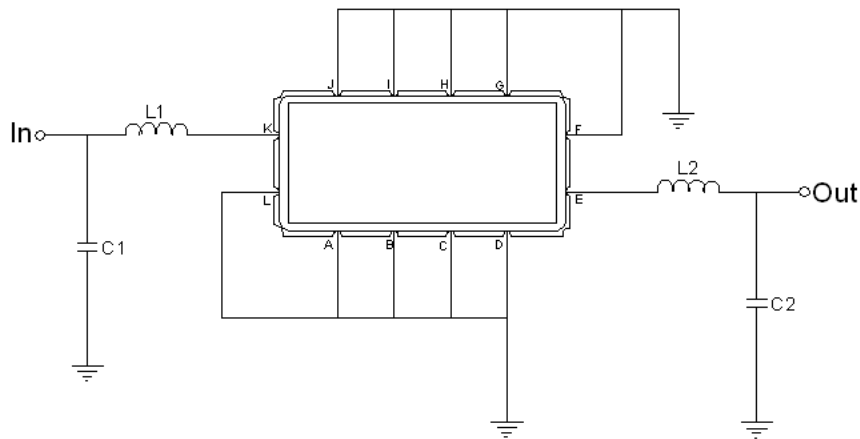
Notes : (1) With Matching Network (Ref. Testing Environment Circuit as shown below).
Those impedances could be modified with different impedance values and/or structures, if necessary.

Package Dimensions



Pin Description	
A, B, C, D, F, G, H, I, J, L	Ground
K	Input
E	Output

Testing Environment



Test Fixture & Values	
Input	L1=56 nH , C1=0 pF
Output	L2=56 nH , C2=0 pF
Source/Load Impedance	50 Ω

□ Frequency Characteristics

Frequency Response

