



*Total Solution Provider in Saw Device*

---

# SL7004V

70.0 MHz IF SAW Filter

3.65 MHz Bandwidth

Revision 1 : 29. Oct. 2007



- Electrical Characteristics
  - Package Dimensions
  - Testing Environment
  - Frequency Characteristics
- 

**SAWNICS Inc.**

---

460 Cheonheung-ri, Seonggeo-eup, Cheonan-si, Chungcheongnam-do, 330-836 / Korea.  
Tel: +82 41 550 9372 / Fax: +82 41 550 9399 / [www.sawnics.com](http://www.sawnics.com)

## □ Electrical Characteristics

### Maximum Ratings

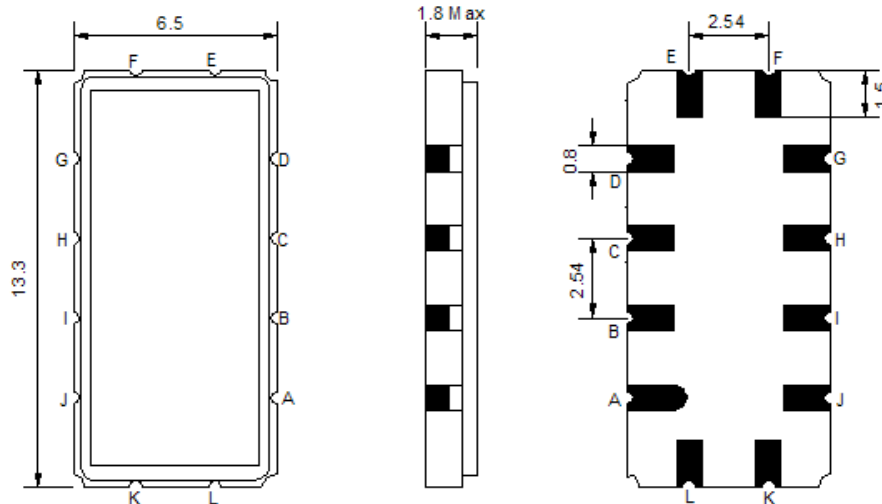
Parameters Description	Unit	Minimum	Typical	Maximum
Operating Temperature Range	°C	-30	-	80
Storage Temperature Range	°C	-40	-	85
Maximum DC Voltage	V	-	-	10
Maximum Input Power	dBm	-	-	10
Source Impedance (single ended) <sup>(1)</sup>	Ω	-	50	-
Load Impedance (single ended) <sup>(1)</sup>	Ω	-	50	-
Package type & size	V			
Length x Width	mm <sup>2</sup>	-	13.3 x 6.5	-
Height	mm	-	-	1.8

### Electrical Specification

Parameters Description	Unit	Minimum	Typical	Maximum
Center Frequency (Fo)	MHz	69.8	70.0	70.2
Insertion Loss at Fo	dB	-	8.5	9.5
Temperature Coefficient	ppm/°C	-	-84	-
Amplitude Ripple Variation at fo ±1.5 MHz	dB <sub>p-p</sub>	-	0.8	1.0
Group Delay Variation at fo ±1.5 MHz	nsec	-	170	220
Absolute Delay at Fo	µsec	-	1.0	-
IN/OUT Return Loss at Fo	dB	-	-	-
Bandwidth at -1.0 dB	MHz	3.4	3.65	-
Bandwidth at -3.0 dB	MHz	4.0	4.45	-
Bandwidth at -40.0 dB	MHz	-	7.18	8.0
<b>Relative Attenuation:</b>				
10 ~ 64.5 MHz	dB	40	45	-
74 ~ 140 MHz	dB	40	43	-

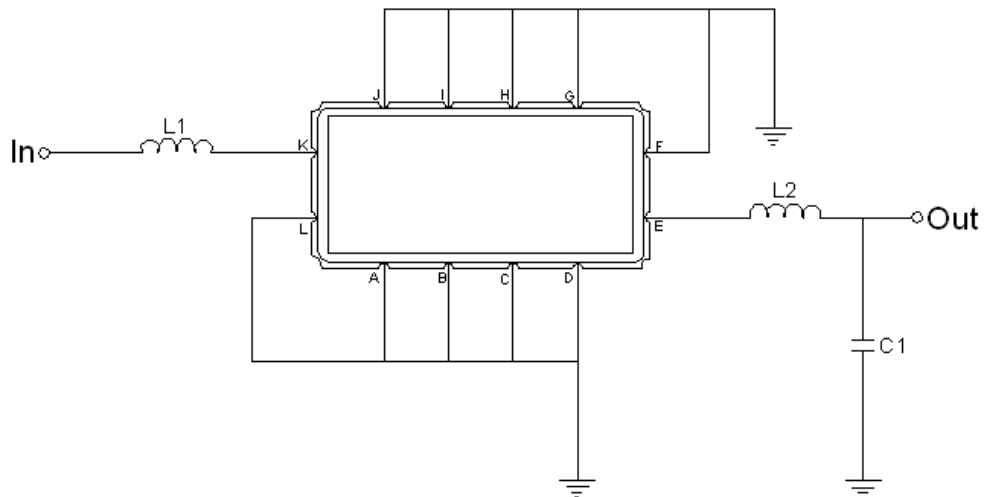
**Notes :** (1) With Matching Network (Ref. Testing Environment Circuit as shown below).  
Those impedances could be modified with different impedance values and/or structures, if necessary.

**□ Package Dimensions**



Pin Description	
A, B, C, D, F, G, H, I, J, L	Ground
K	Input
E	Output

**□ Testing Environment**



Test Fixture & Values	
Input	L1=220nH Q >40 ,
Output	L2=100nH Q.>40 , C1=22pF
Source/Load Impedance	50 Ω

**□ Frequency Characteristics**

Frequency Response

